



PRE-LEASING CLIFFDALE SHOPPING CENTER

LEASE OVERVIEW

LEASE PRICE | \$30 PER SF

TENANT ALLOWANCE | \$30 PER SF

LEASE TYPE | NNN

SQUARE FEET | 1,625 +/- SF PER UNIT

ESTIMATED COMPLETION | Q2 2026

ZONING | LIMITED COMMERCIAL

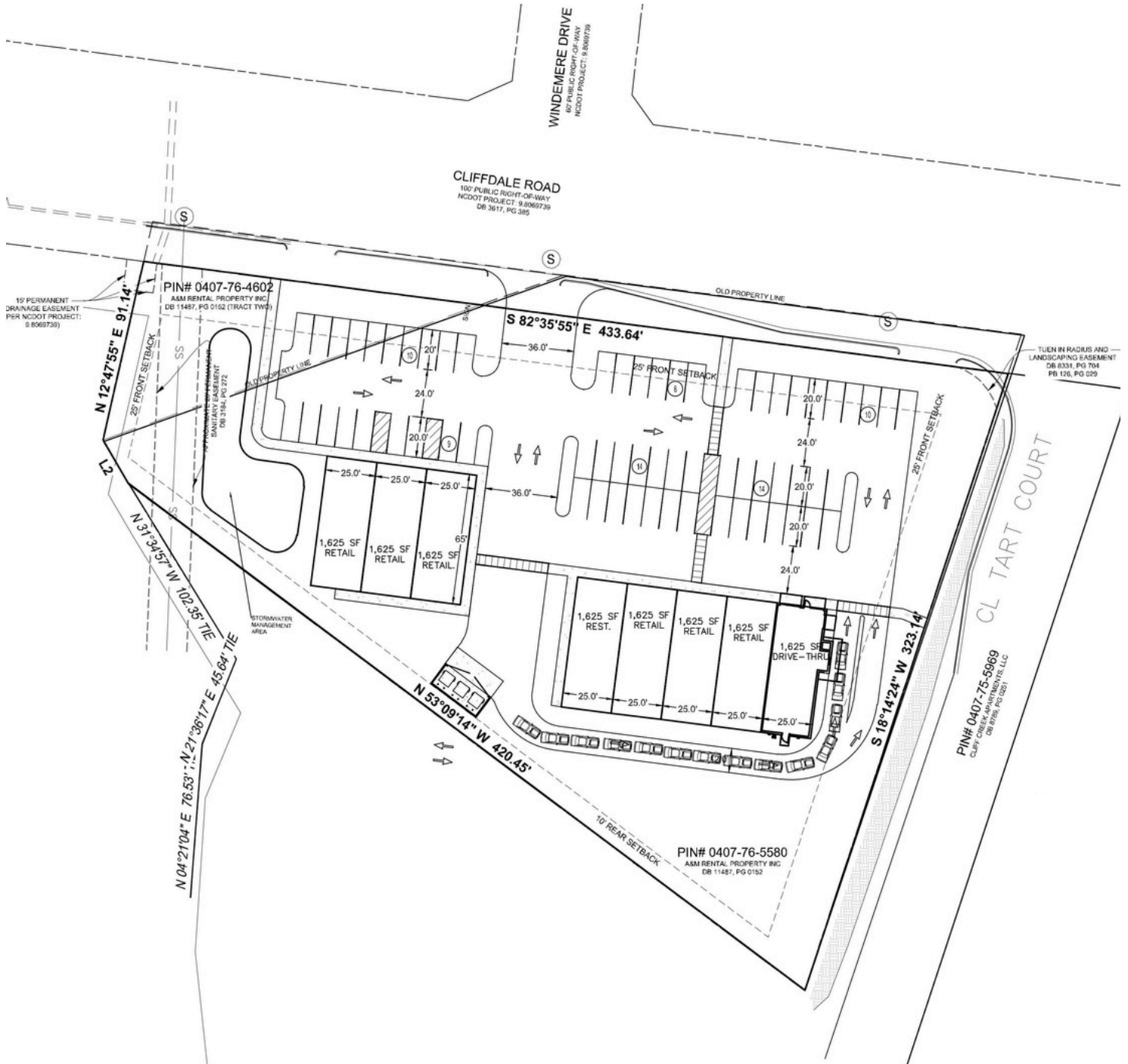
This future shopping center will feature two buildings: Building 1 with five units and Building 2 with three units, each unit providing approximately 1,625 +/- square feet of space. Conveniently situated on Cliffdale Road and just moments from Skibo Road, Fayetteville's primary retail corridor, this location guarantees visibility to the approximately 31,500 vehicles passing by each day. With an estimated completion in the second quarter of 2026, tenants will benefit from a \$30 per square foot tenant improvement allowance. Seize the opportunity to secure your space in this promising retail spot—contact us today to explore pre-leasing opportunities!

GEORGE MANLEY
NC BROKER
C: 910.603.8395
GEORGE@CSGNC.COM

CAROLINA SUMMIT GROUP
390 SW Broad Street, Suite B
Southern Pines, NC 28387
910.684.5353
carolinasummitgroup.com

HOLLY BELL
NC BROKER
C: 910.690.1065
HOLLY@CSGNC.COM

PRELIMINARY CONCEPT PLAN



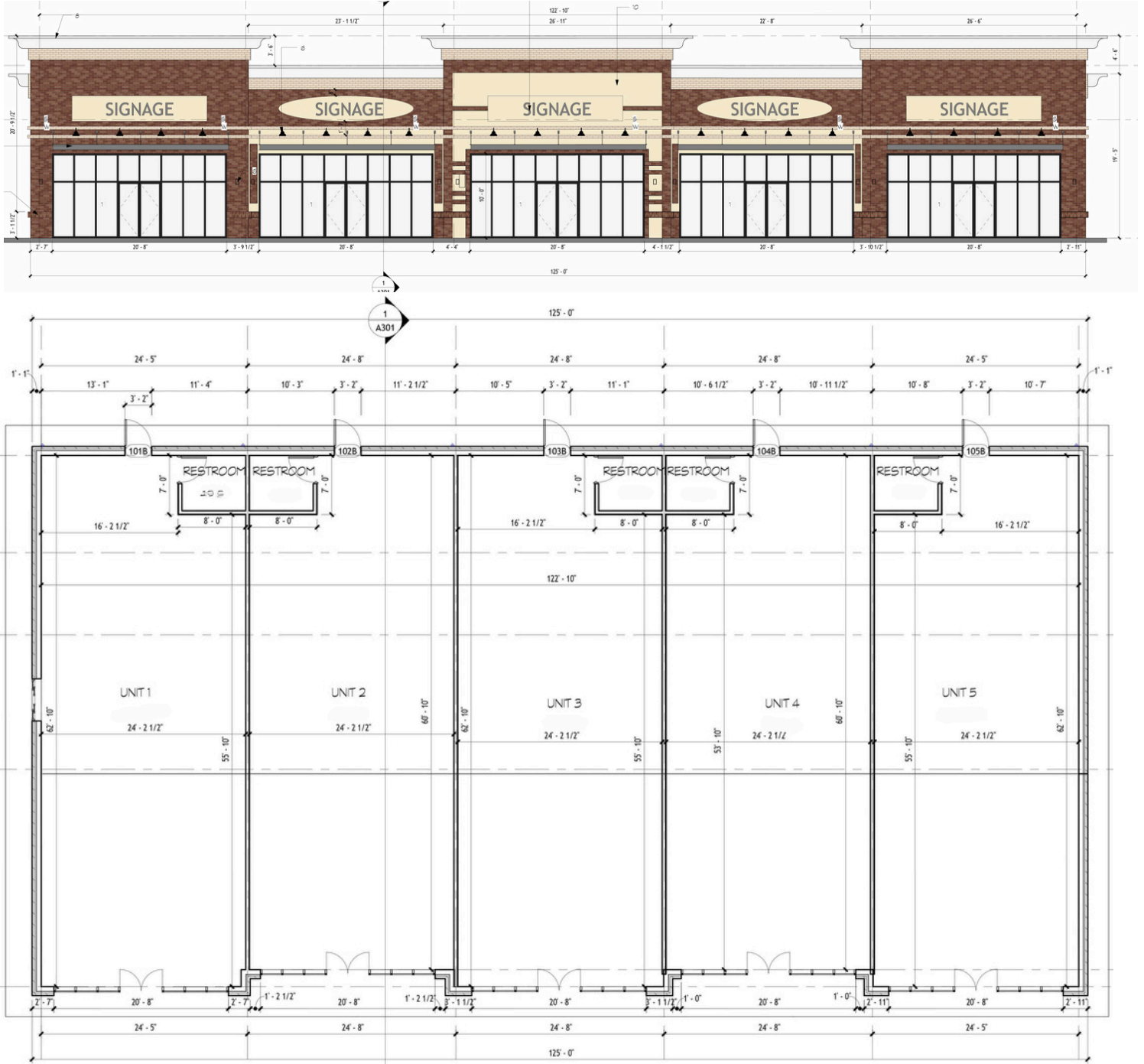
NOTE: Preliminary Concept Plan is for illustrative purposes only.
 Actual dimensions & details may vary.

GEORGE MANLEY
 NC BROKER
 C: 910.603.8395
 GEORGE@CSGNC.COM

CAROLINA SUMMIT GROUP
 390 SW Broad Street, Suite B
 Southern Pines, NC 28387
 910.684.5353
 carolinasummitgroup.com

HOLLY BELL
 NC BROKER
 C: 910.690.1065
 HOLLY@CSGNC.COM

PRELIMINARY FLOOR PLANS | BUILDING 1



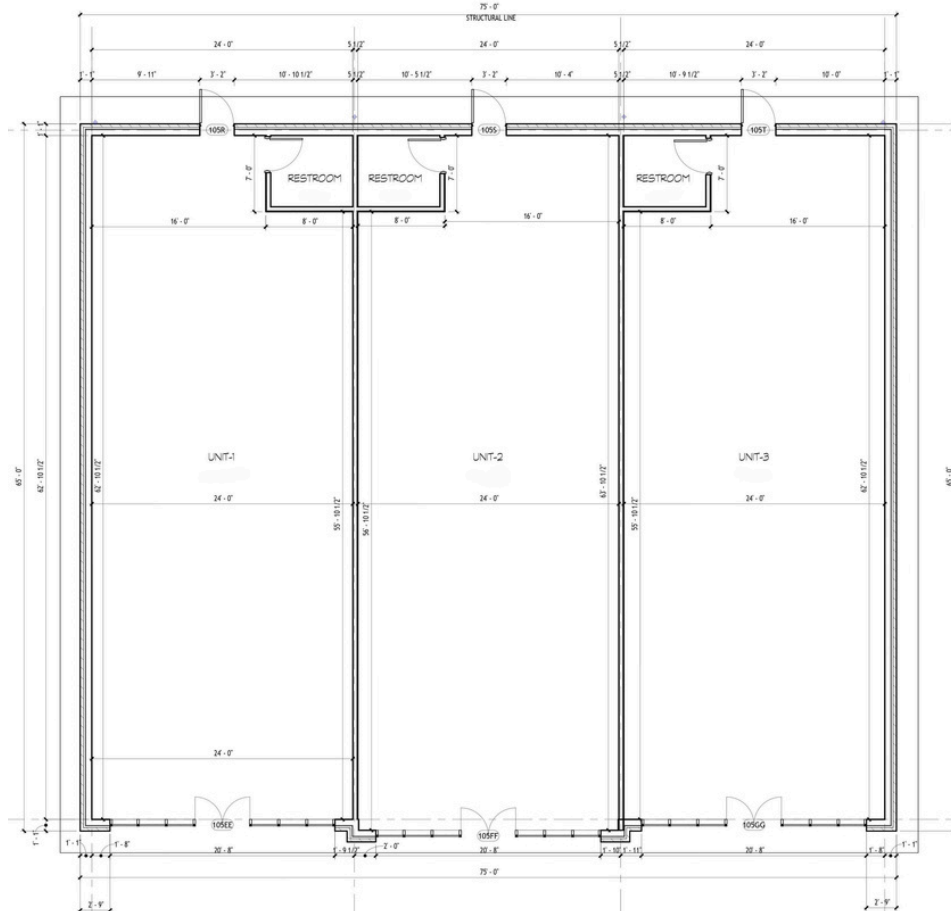
NOTE: Preliminary Floor Plans are for illustrative purposes only.
 Actual dimensions & details may vary.

GEORGE MANLEY
 NC BROKER
 C: 910.603.8395
 GEORGE@CSGNC.COM

CAROLINA SUMMIT GROUP
 390 SW Broad Street, Suite B
 Southern Pines, NC 28387
 910.684.5353
 carolinasummitgroup.com

HOLLY BELL
 NC BROKER
 C: 910.690.1065
 HOLLY@CSGNC.COM

PRELIMINARY FLOOR PLANS | BUILDING 2



NOTE: Preliminary Floor Plans are for illustrative purposes only.
 Actual dimensions & details may vary.

GEORGE MANLEY
 NC BROKER
 C: 910.603.8395
 GEORGE@CSGNC.COM

CAROLINA SUMMIT GROUP
 390 SW Broad Street, Suite B
 Southern Pines, NC 28387
 910.684.5353
 carolinasummitgroup.com

HOLLY BELL
 NC BROKER
 C: 910.690.1065
 HOLLY@CSGNC.COM

RETAIL MAP

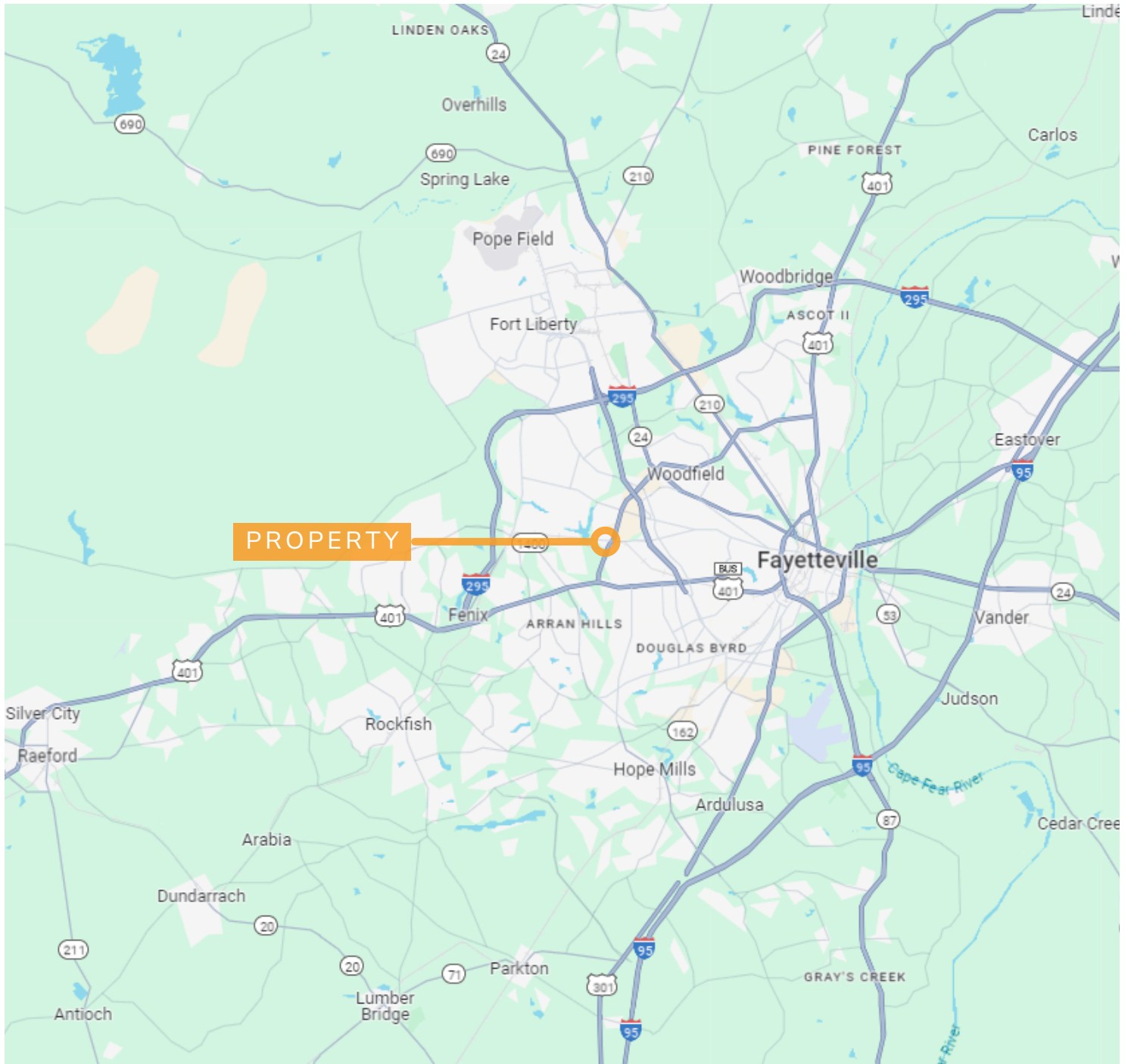


GEORGE MANLEY
 NC BROKER
 C: 910.603.8395
GEORGE@CSGNC.COM

CAROLINA SUMMIT GROUP
 390 SW Broad Street, Suite B
 Southern Pines, NC 28387
 910.684.5353
carolinasummitgroup.com

HOLLY BELL
 NC BROKER
 C: 910.690.1065
HOLLY@CSGNC.COM

LOCATION MAP



GEORGE MANLEY
NC BROKER
C: 910.603.8395
GEORGE@CSGNC.COM

CAROLINA SUMMIT GROUP
390 SW Broad Street, Suite B
Southern Pines, NC 28387
910.684.5353
carolinasummitgroup.com

HOLLY BELL
NC BROKER
C: 910.690.1065
HOLLY@CSGNC.COM