

## 30 +/- Acres in Moore County

### PROPERTY OVERVIEW

**PRICE** | \$450,000

**PARCEL ID** | 00047016

**ACREAGE** | 30.08 +/- ACRES

**ZONING** | RURAL AGRICULTURAL

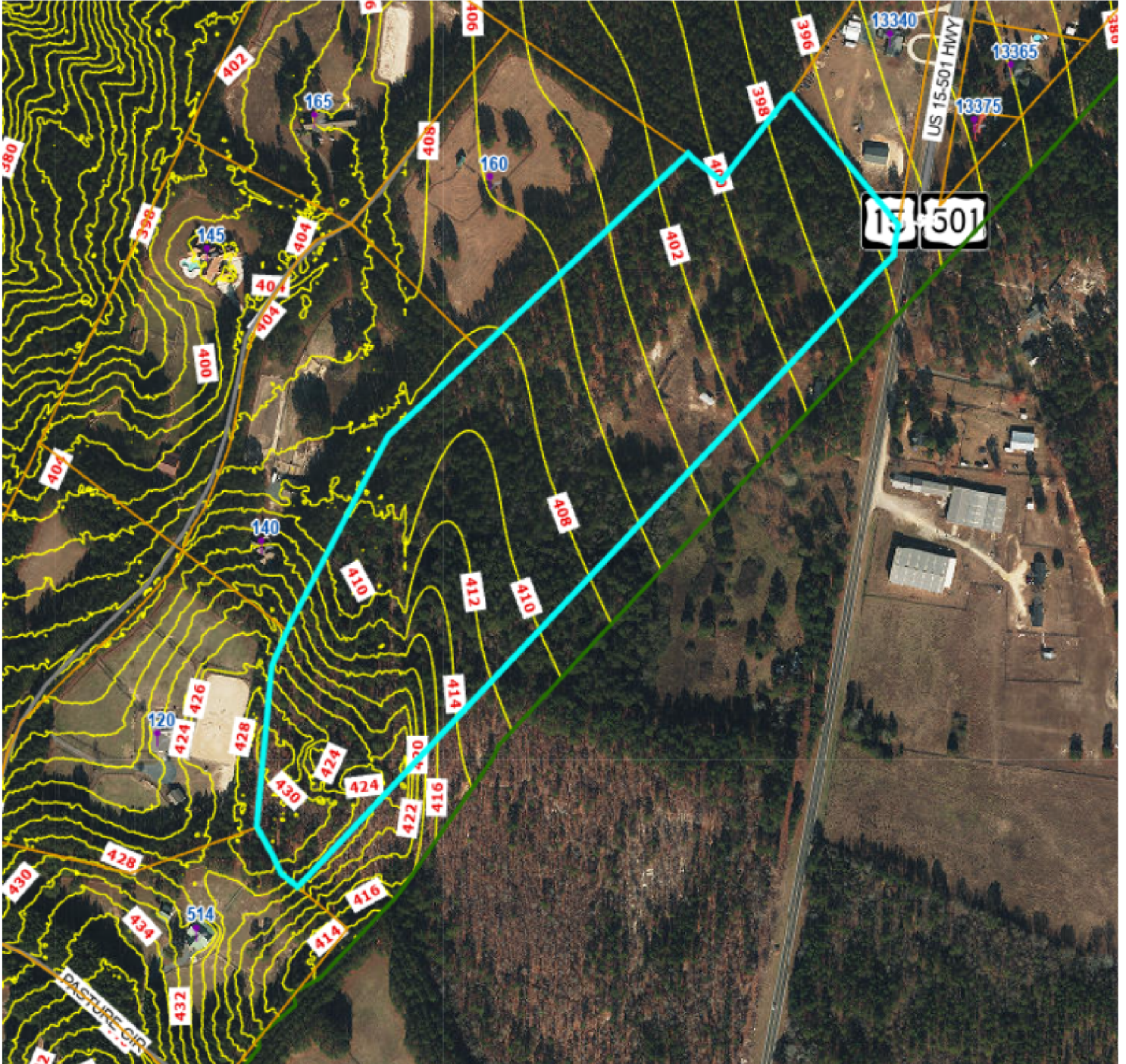
30 +/- acres available just 7 miles South of Aberdeen right near the Moore County/Hoke County line. Relatively flat, no wetlands, partially cleared. Great land to build the dream farm or a private estate tucked away back in the trees. Land is in Moore County and is approved for horses.

**LARRY BERGIN**  
NC BROKER  
C: 910.633.7215  
LARRY@CSGNC.COM

**CAROLINA SUMMIT GROUP**  
235 E Pennsylvania Ave.  
Southern Pines, NC 28387  
910.684.5353  
carolinasummitgroup.com

**GEORGE MANLEY**  
NC BROKER  
C: 910.603.8395  
GEORGE@CSGNC.COM

**CONTOURS**

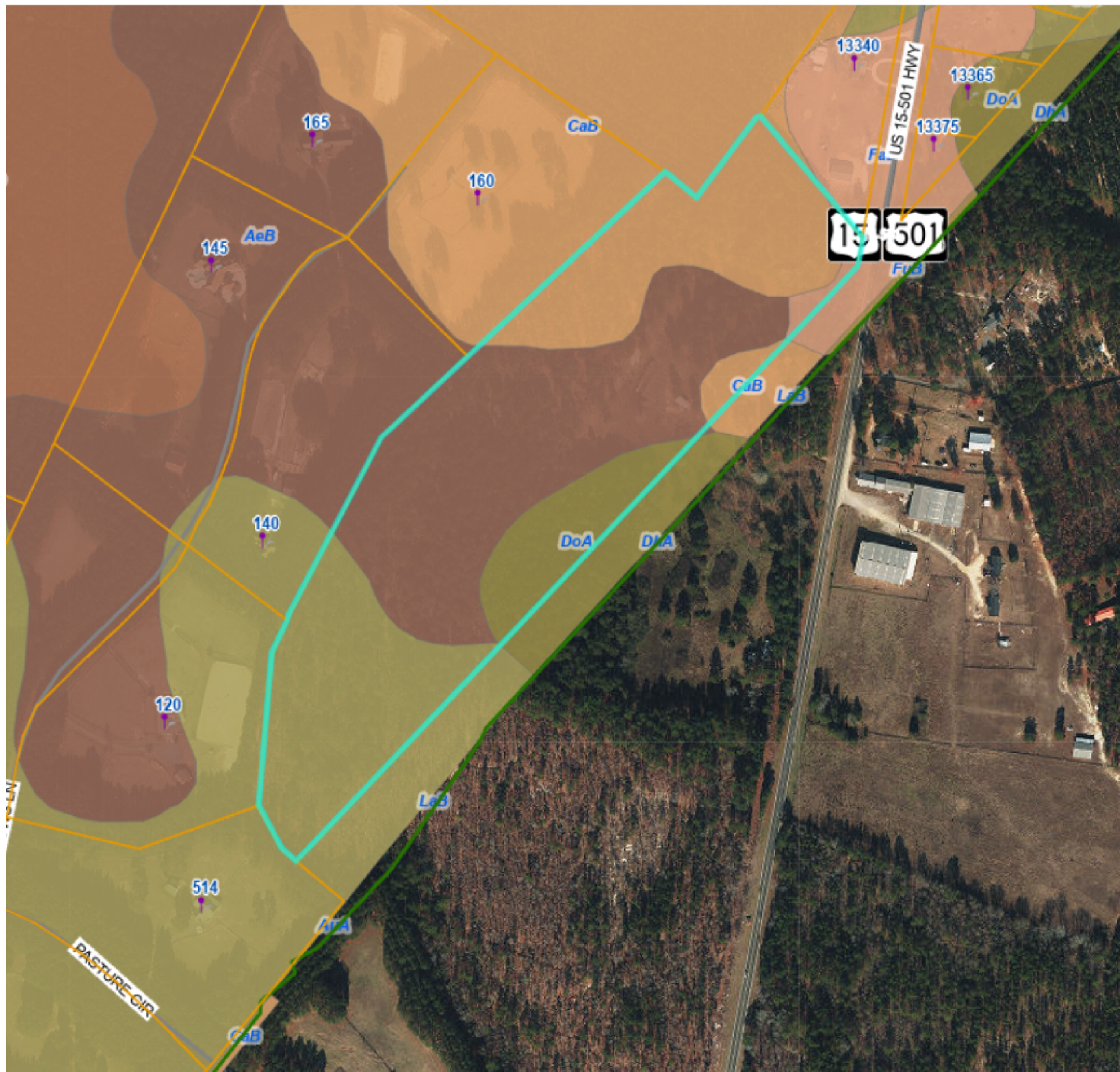


**LARRY BERGIN**  
NC BROKER  
C: 910.633.7215  
LARRY@CSGNC.COM

**CAROLINA SUMMIT GROUP**  
235 E Pennsylvania Ave.  
Southern Pines, NC 28387  
910.684.5353  
carolinasummitgroup.com

**GEORGE MANLEY**  
NC BROKER  
C: 910.603.8395  
GEORGE@CSGNC.COM

**SOIL MAP**

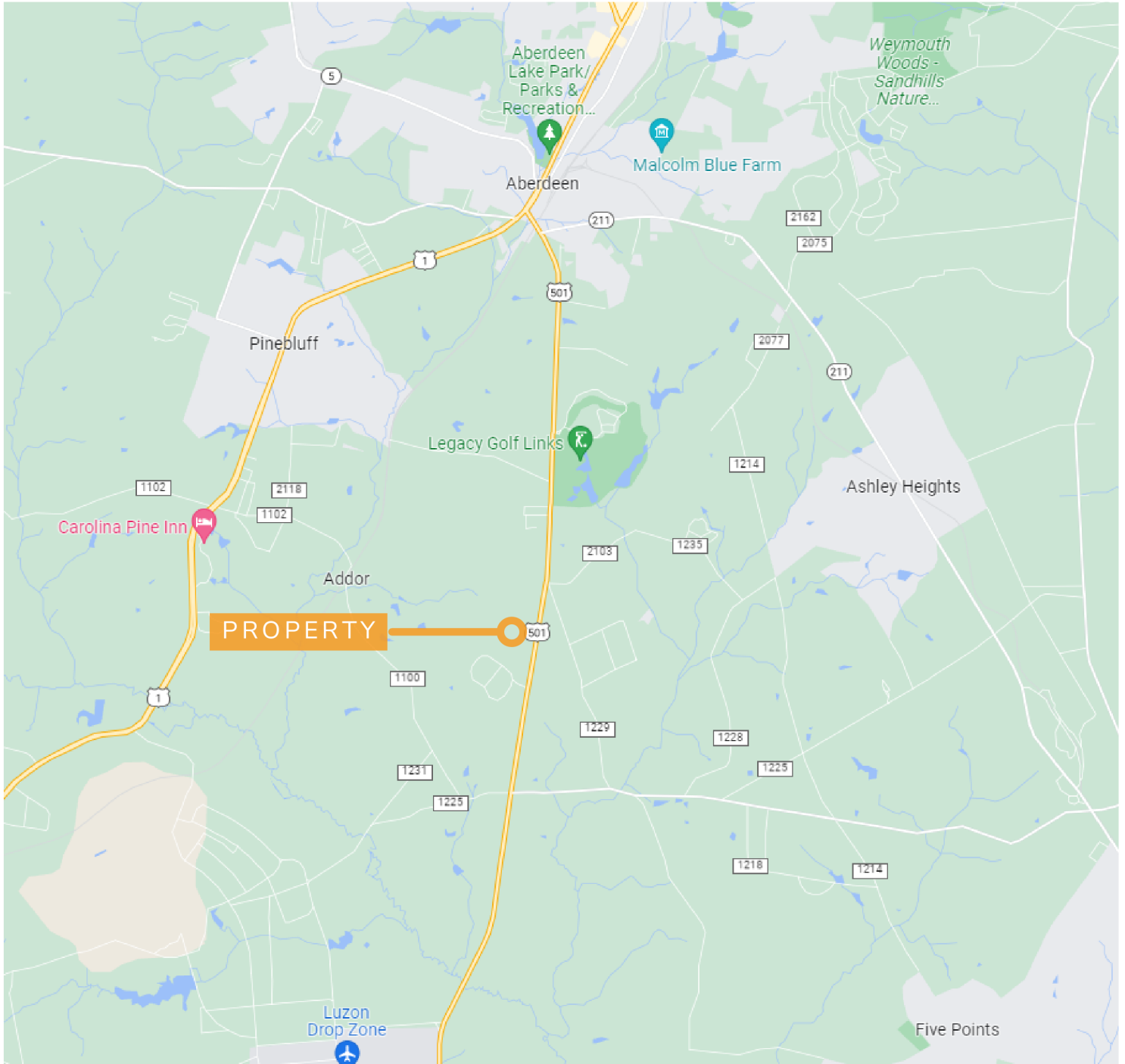


**LARRY BERGIN**  
NC BROKER  
C: 910.633.7215  
LARRY@CSGNC.COM

**CAROLINA SUMMIT GROUP**  
235 E Pennsylvania Ave.  
Southern Pines, NC 28387  
910.684.5353  
carolinasummitgroup.com

**GEORGE MANLEY**  
NC BROKER  
C: 910.603.8395  
GEORGE@CSGNC.COM

**LOCATION MAP**



**LARRY BERGIN**  
NC BROKER  
C: 910.633.7215  
LARRY@CSGNC.COM

**CAROLINA SUMMIT GROUP**  
235 E Pennsylvania Ave.  
Southern Pines, NC 28387  
910.684.5353  
carolinasummitgroup.com

**GEORGE MANLEY**  
NC BROKER  
C: 910.603.8395  
GEORGE@CSGNC.COM