



OFFICE FOR LEASE IN DOWNTOWN

PROPERTY OVERVIEW

AVAILABLE | SUITE D (UPPER LEVEL)

LEASE PRICE | \$23 PER SF

LEASE TYPE | NNN

SQUARE FEET | 1,703 +/- SF

ZONING | CENTRAL BUSINESS &
HISTORIC DISTRICT

This upper-level unit offers approximately 1,703 +/- square feet of inviting workspace, ideal for businesses seeking a unique office environment in downtown Southern Pines. Accessed through an entrance at the rear of the building, the layout includes a lobby area with an adjacent office, a large open work area leading to a conference room, and a private restroom. Skylights throughout the space fill it with natural light, while sloped ceilings add extra character, creating a blend of functionality and interest.

HOLLY BELL
NC BROKER
C: 910.690.1065
HOLLY@CSGNC.COM

CAROLINA SUMMIT GROUP
115 W Pennsylvania Ave.
Southern Pines, NC 28387
910.684.5353
carolinasummitgroup.com

GEORGE MANLEY
NC BROKER
C: 910.603.8395
GEORGE@CSGNC.COM

PHOTOS

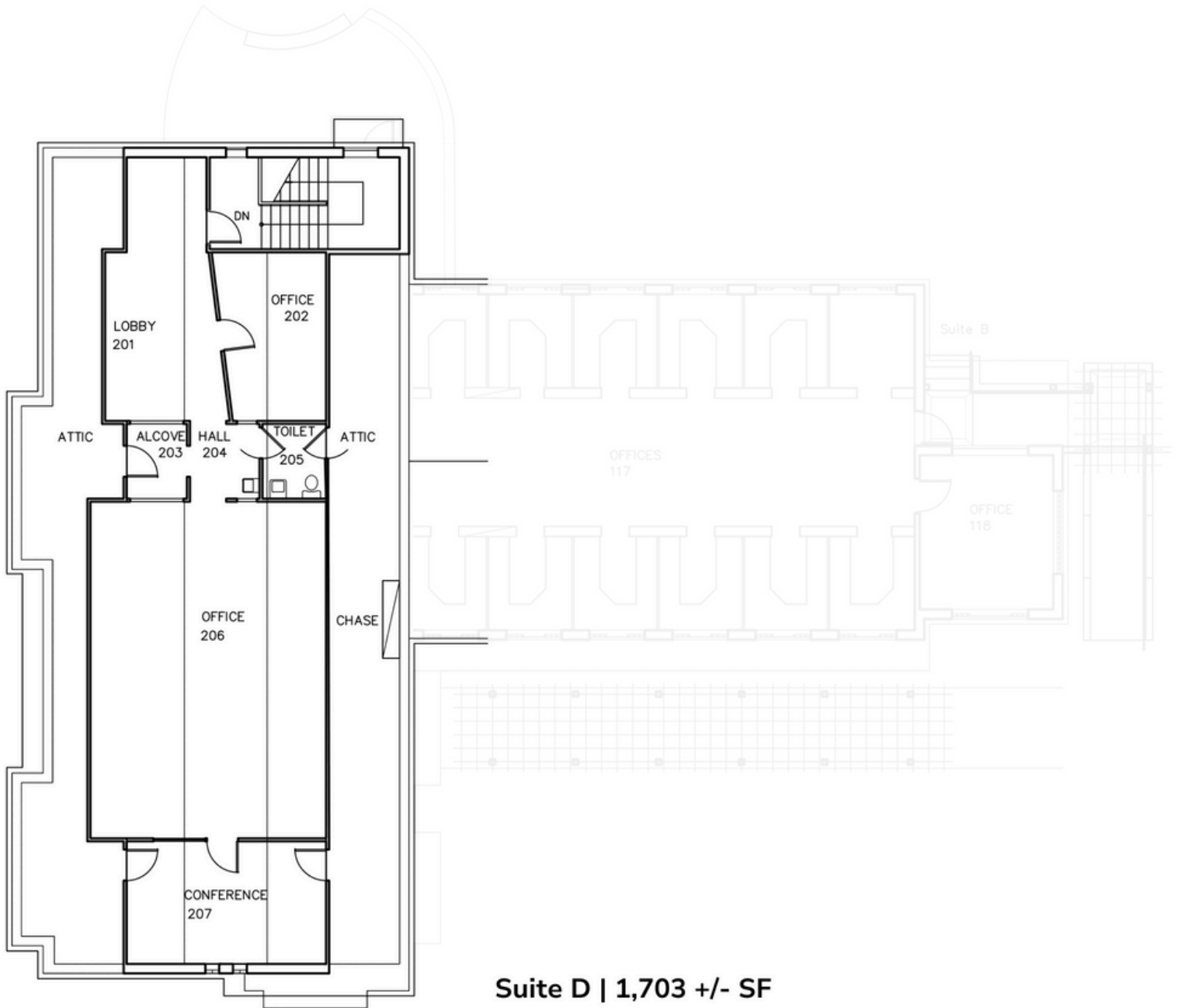


HOLLY BELL
NC BROKER
C: 910.690.1065
HOLLY@CSGNC.COM

CAROLINA SUMMIT GROUP
115 W Pennsylvania Ave.
Southern Pines, NC 28387
910.684.5353
carolinasummitgroup.com

GEORGE MANLEY
NC BROKER
C: 910.603.8395
GEORGE@CSGNC.COM

FLOOR PLANS | UPPER FLOOR



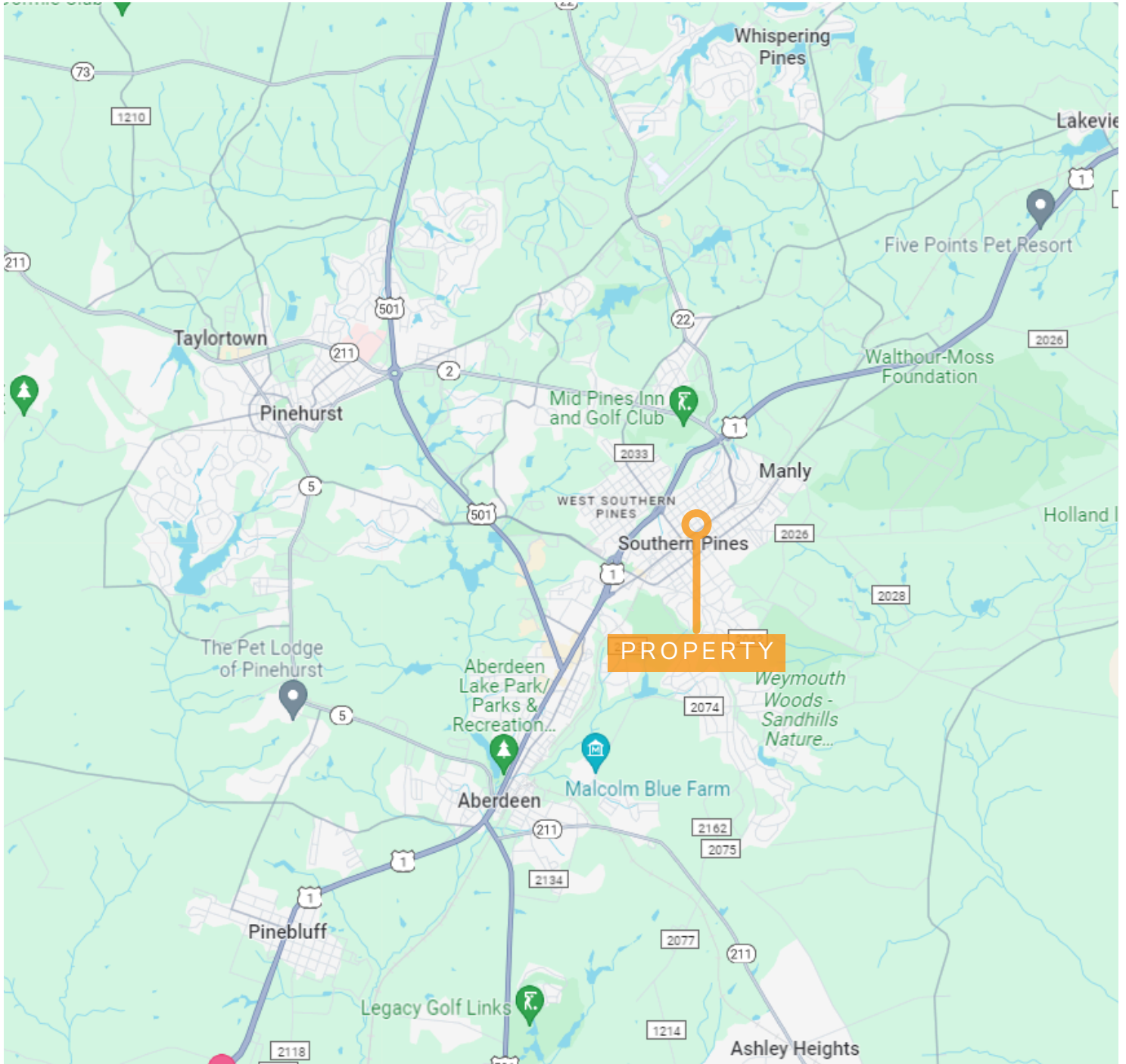
NOTE: Floor plans are for illustrative purposes only.
Actual dimensions & details may vary. Not to scale.

HOLLY BELL
NC BROKER
C: 910.690.1065
HOLLY@CSGNC.COM

CAROLINA SUMMIT GROUP
115 W Pennsylvania Ave.
Southern Pines , NC 28387
910.684.5353
carolinasummitgroup.com

GEORGE MANLEY
NC BROKER
C: 910.603.8395
GEORGE@CSGNC.COM

LOCATION MAP



HOLLY BELL
NC BROKER
C: 910.690.1065
HOLLY@CSGNC.COM

CAROLINA SUMMIT GROUP
115 W Pennsylvania Ave.
Southern Pines , NC 28387
910.684.5353
carolinasummitgroup.com

GEORGE MANLEY
NC BROKER
C: 910.603.8395
GEORGE@CSGNC.COM