



## INDIVIDUAL OFFICE FOR LEASE

### LEASE OVERVIEW

AVAILABLE SUITE | SUITE 11

LEASE PRICE | \$800 PER MONTH

SQUARE FEET | 152 +/- SF

LEASE TYPE | MODIFIED GROSS

ZONING | CB & HISTORIC

Great opportunity to lease an individual office in Downtown Southern Pines. The property is within walking distance of local retail shops, unique dining, and the post office. The second-floor executive offices are accessed via a common area stairway. Electric, water, and sewer included. Suite 11 with 152 +/- square feet is available immediately.

**HOLLY BELL**  
NC BROKER  
C: 910.690.1065  
HOLLY@CSGNC.COM

CAROLINA SUMMIT GROUP  
390 SW Broad Street  
Southern Pines, NC 28387  
910.684.5353  
carolinasmithgroup.com

**GEORGE MANLEY**  
NC BROKER  
C: 910.603.8395  
GEORGE@CSGNC.COM

**PHOTOS**

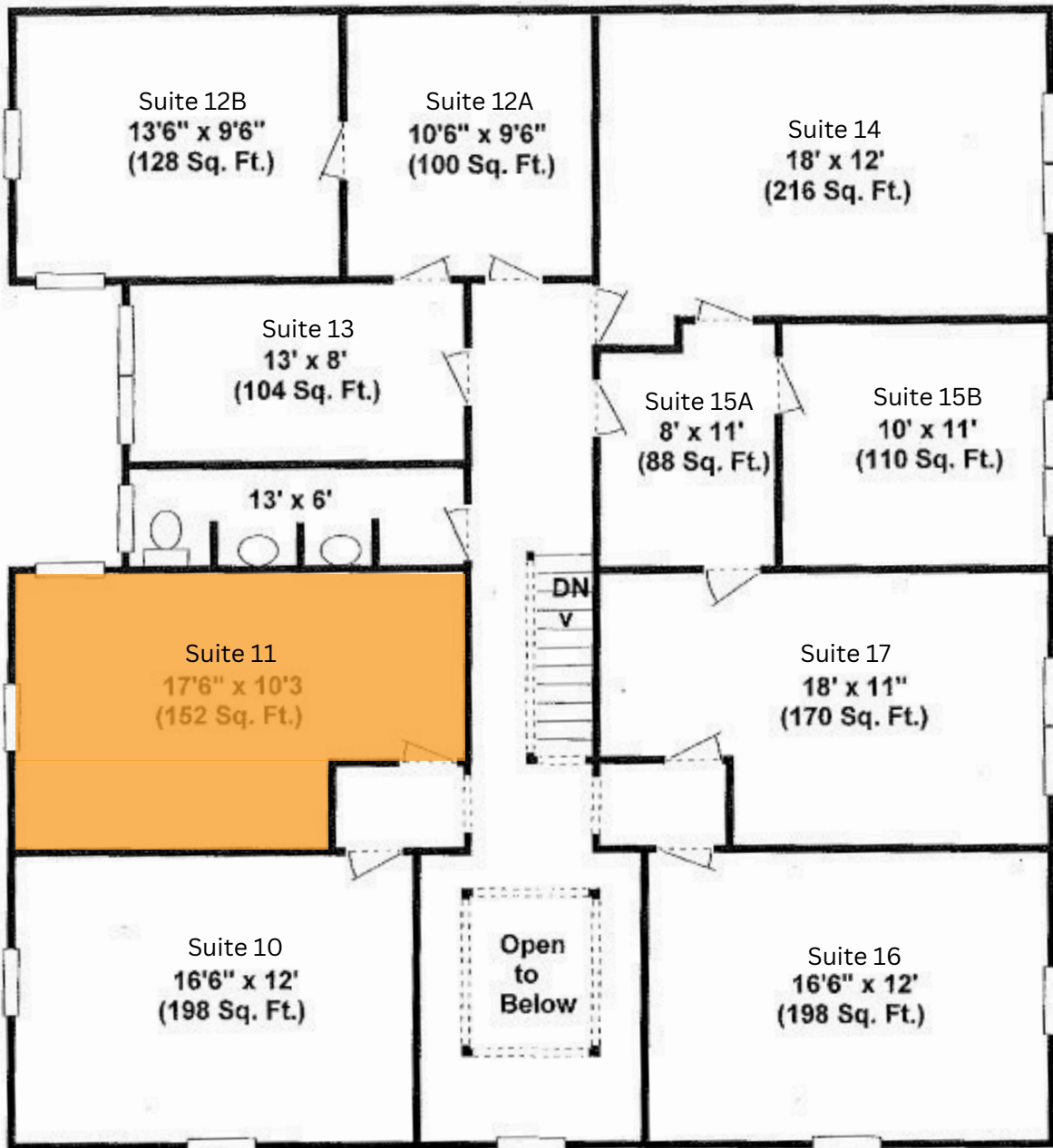


**HOLLY BELL**  
NC BROKER  
C: 910.690.1065  
HOLLY@CSGNC.COM

**CAROLINA SUMMIT GROUP**  
390 SW Broad Street  
Southern Pines, NC 28387  
910.684.5353  
carolinasmittgroup.com

**GEORGE MANLEY**  
NC BROKER  
C: 910.603.8395  
GEORGE@CSGNC.COM

**FLOOR PLANS | SUITE 11**



NOTE: Floor plan is for illustrative purposes only.  
Actual dimensions & details may vary.

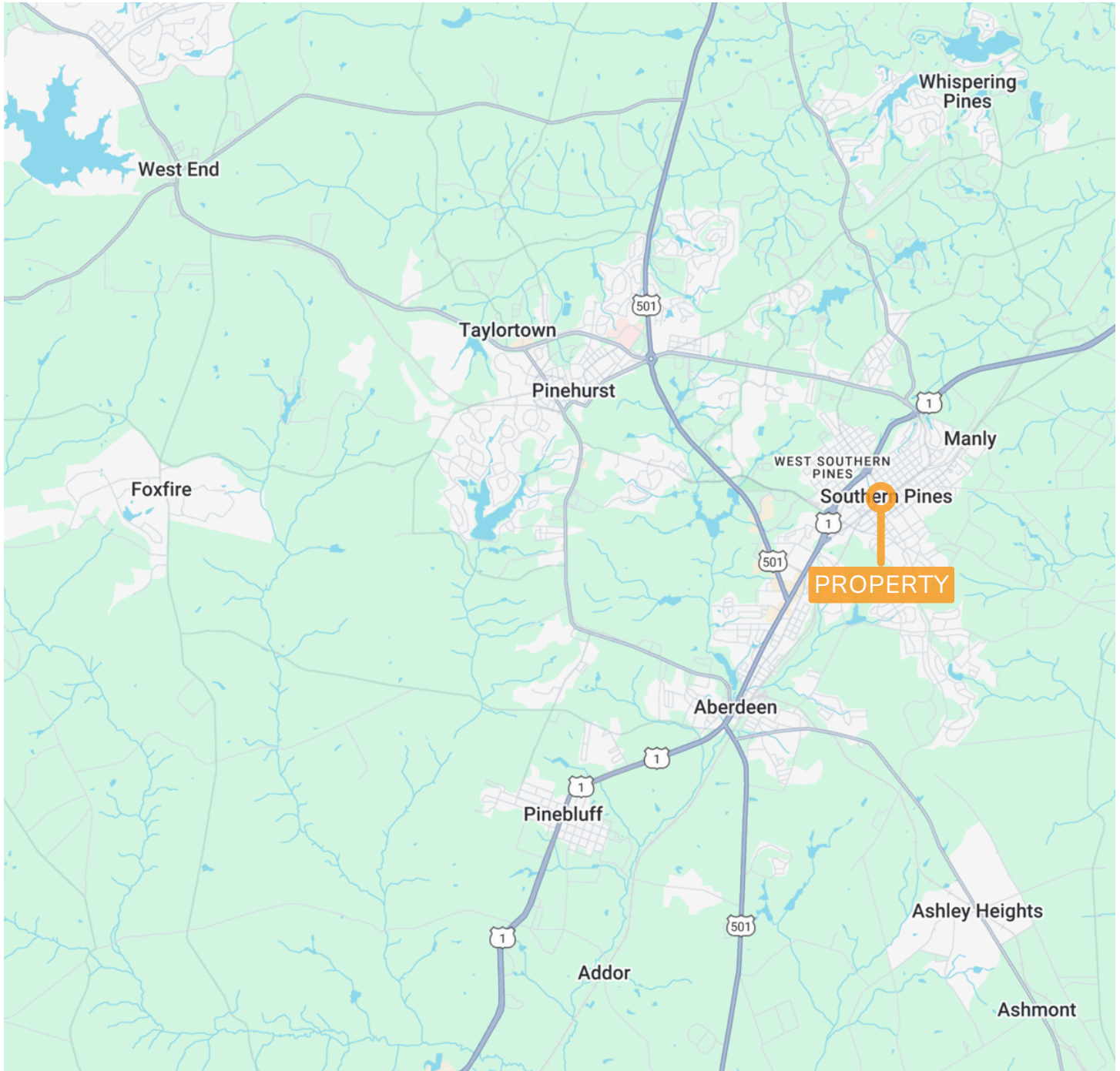
**HOLLY BELL**  
NC BROKER  
C: 910.690.1065  
HOLLY@CSGNC.COM

**CAROLINA SUMMIT GROUP**  
390 SW Broad Street  
Southern Pines, NC 28387  
910.684.5353  
carolinasummitgroup.com

**GEORGE MANLEY**  
NC BROKER  
C: 910.603.8395  
GEORGE@CSGNC.COM



**LOCATION MAP**



**HOLLY BELL**  
NC BROKER  
C: 910.690.1065  
HOLLY@CSGNC.COM

**CAROLINA SUMMIT GROUP**  
390 SW Broad Street  
Southern Pines, NC 28387  
910.684.5353  
carolinasummitgroup.com

**GEORGE MANLEY**  
NC BROKER  
C: 910.603.8395  
GEORGE@CSGNC.COM