



## LAND FOR SALE IN LEE COUNTY

### PROPERTY OVERVIEW

**PRICE** | \$2,400,000

**PIN** | 9547-47-6610-00

**ACREAGE** | +/- 192 ACRES

**ZONING** | RA

+/- 192 acres with approximately 4,600 feet of road frontage on Blacks Chapel Road and Sheriff Watson Road, offering a versatile mix of cleared agricultural land and natural areas with pine regeneration. The property features a small pond, ideal for enhancing its scenic appeal. Currently leased for hunting and farming. Its expansive road frontage and diverse land composition make it suitable for agricultural, recreational, or investment purposes.

**MATTHEW WIMBERLY, RF, ACF**

NC BROKER

C: 910.639.0124

MATT@CSGNC.COM

**CAROLINA SUMMIT GROUP**

390 SW Broad Street

Southern Pines, NC 28387

910.684.5353

carolinasummitgroup.com



**PHOTOS**

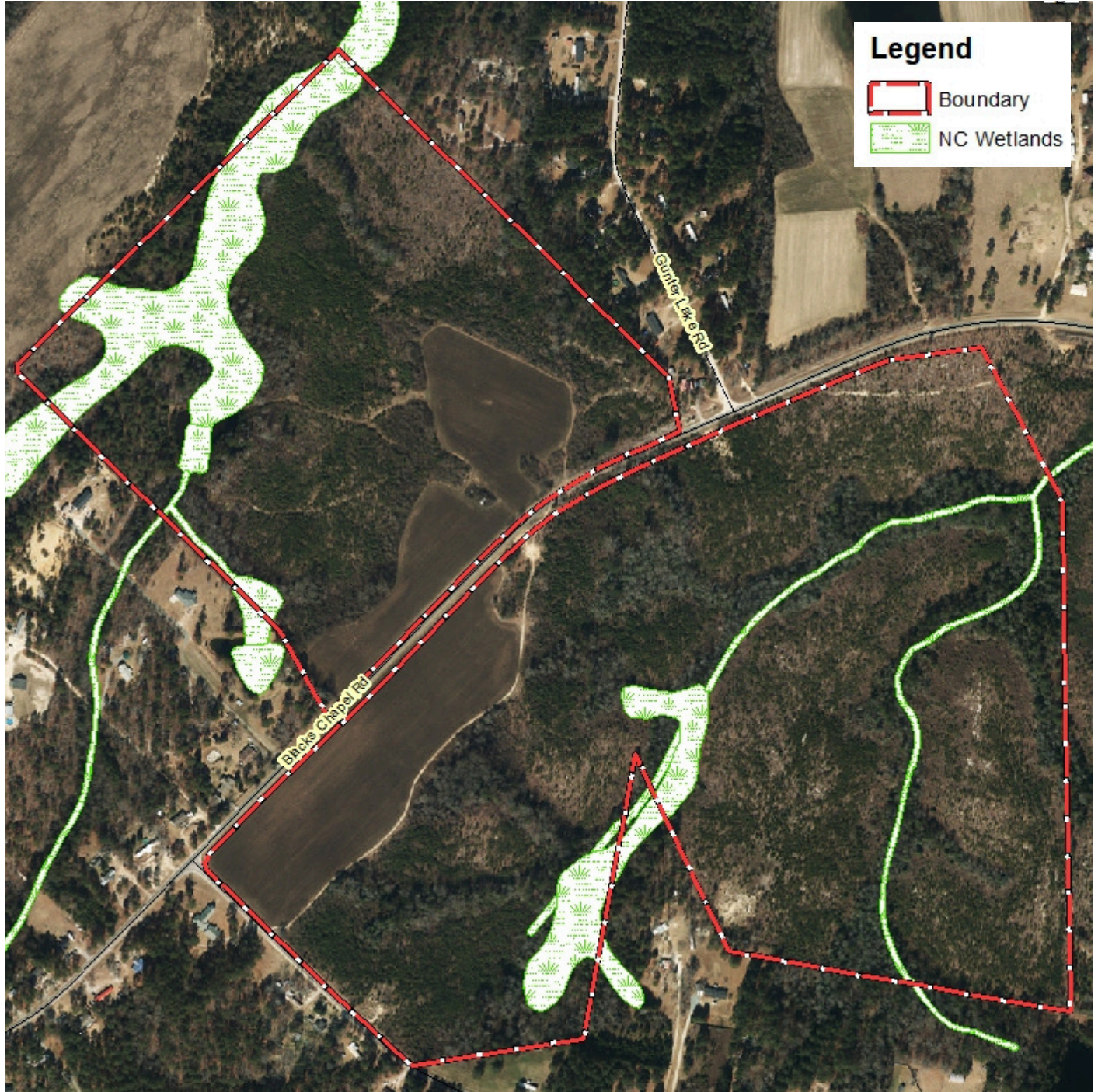


**MATTHEW WIMBERLY, RF, ACF**  
NC BROKER  
C: 910.639.0124  
MATT@CSGNC.COM

**CAROLINA SUMMIT GROUP**  
390 SW Broad Street  
Southern Pines, NC 28387  
910.684.5353  
carolinasummitgroup.com



**AERIAL MAP**



**Legend**

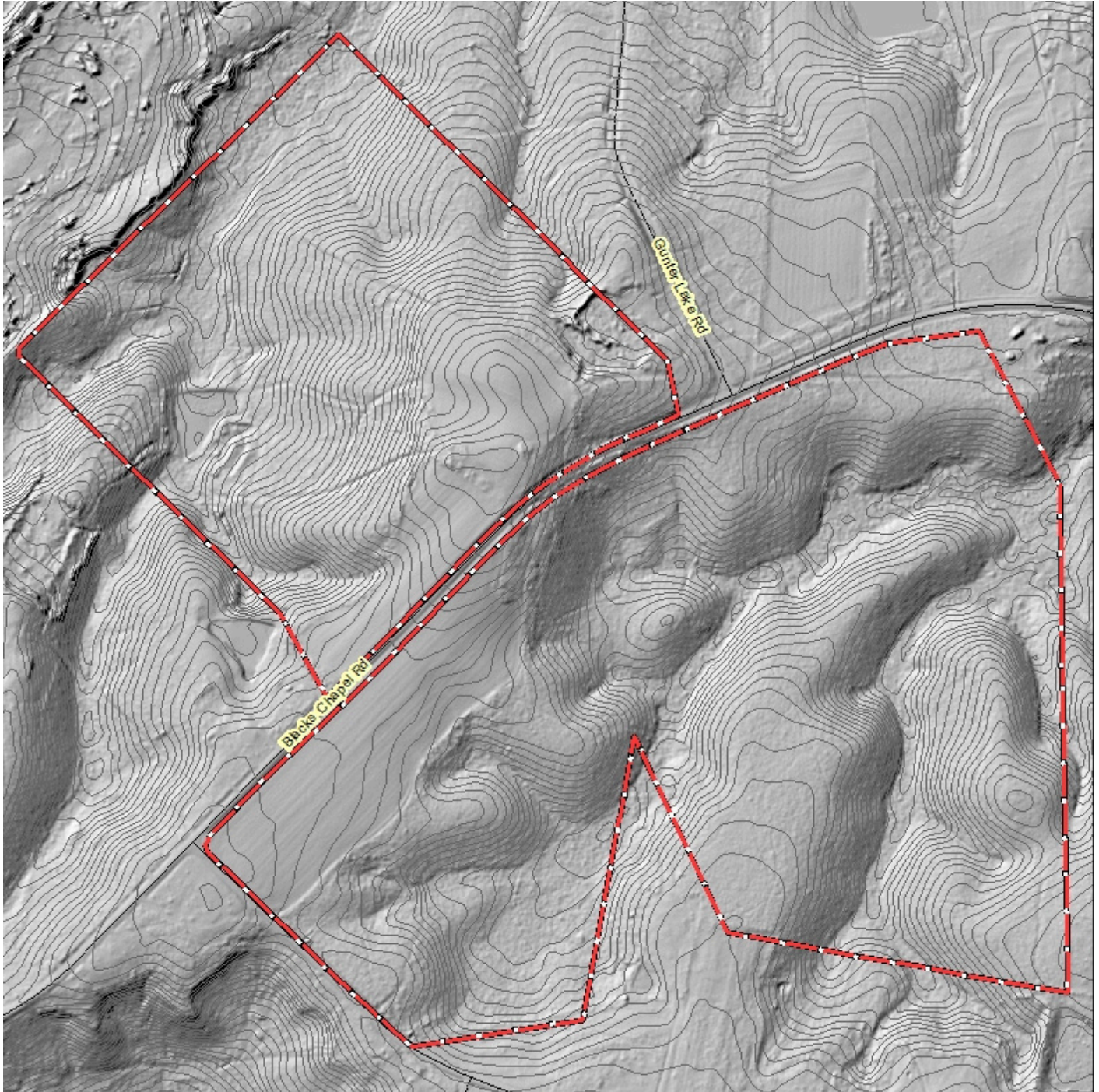
-  Boundary
-  NC Wetlands

**MATTHEW WIMBERLY, RF, ACF**  
NC BROKER  
C: 910.639.0124  
MATT@CSGNC.COM

**CAROLINA SUMMIT GROUP**  
390 SW Broad Street  
Southern Pines, NC 28387  
910.684.5353  
carolinasummitgroup.com



TOPO MAP

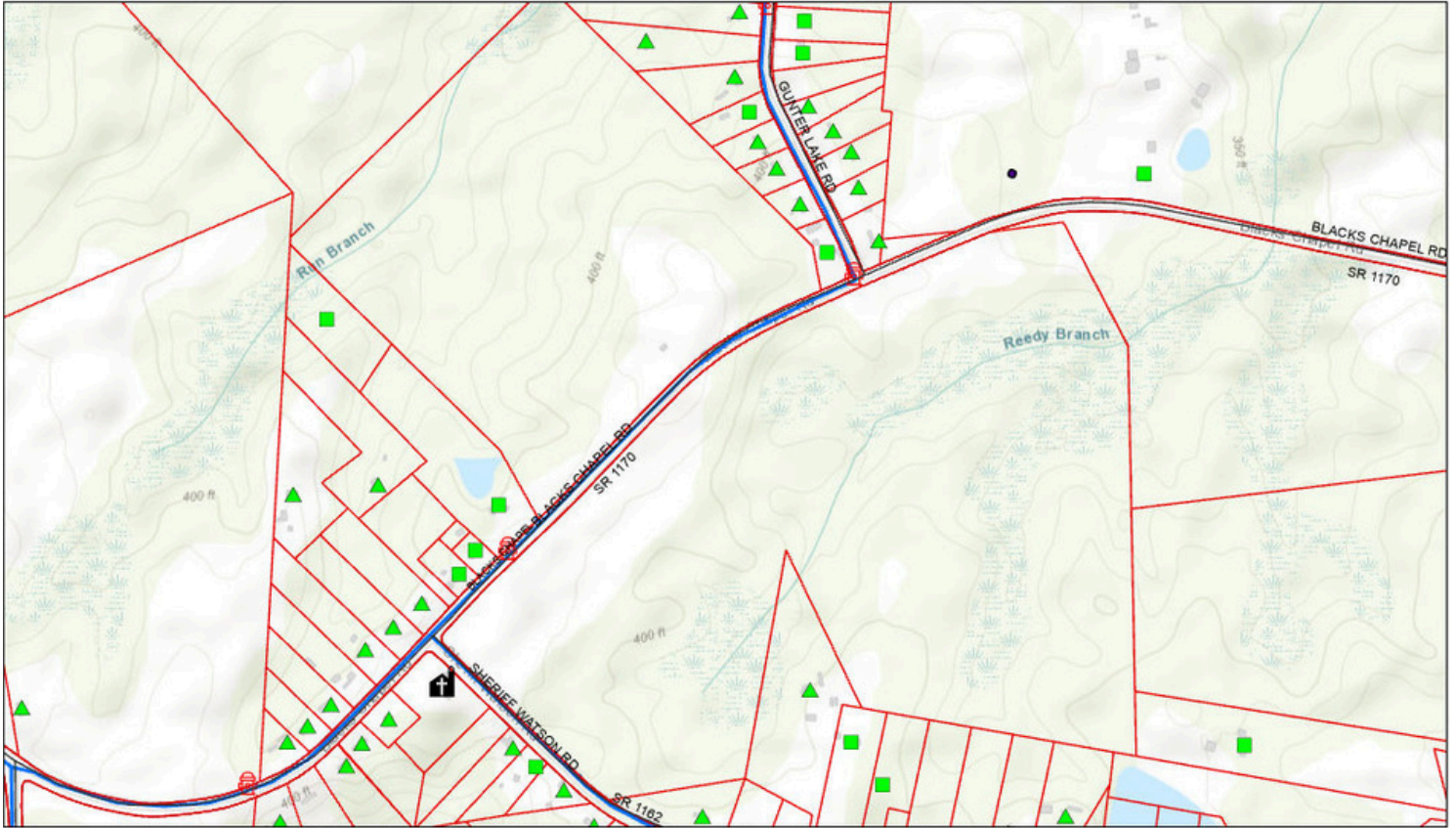


**MATTHEW WIMBERLY, RF, ACF**  
NC BROKER  
C: 910.639.0124  
MATT@CSGNC.COM

**CAROLINA SUMMIT GROUP**  
390 SW Broad Street  
Southern Pines, NC 28387  
910.684.5353  
carolinasummitgroup.com

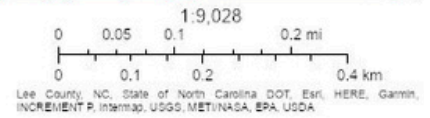


## UTILITIES MAP



1/7/2025, 11:53:37 AM

- CountyBoundary
- Parcels
- Streets
- ⛪ CHURCH
- RESIDENCE
- MOBILE HOME
- RightOfWay
- ⛑ WaterHydrants
- WaterMain
- <all other values>



AroGIS Web AppBuilder  
The County of Lee assumes no legal responsibility for the information contained on this site.

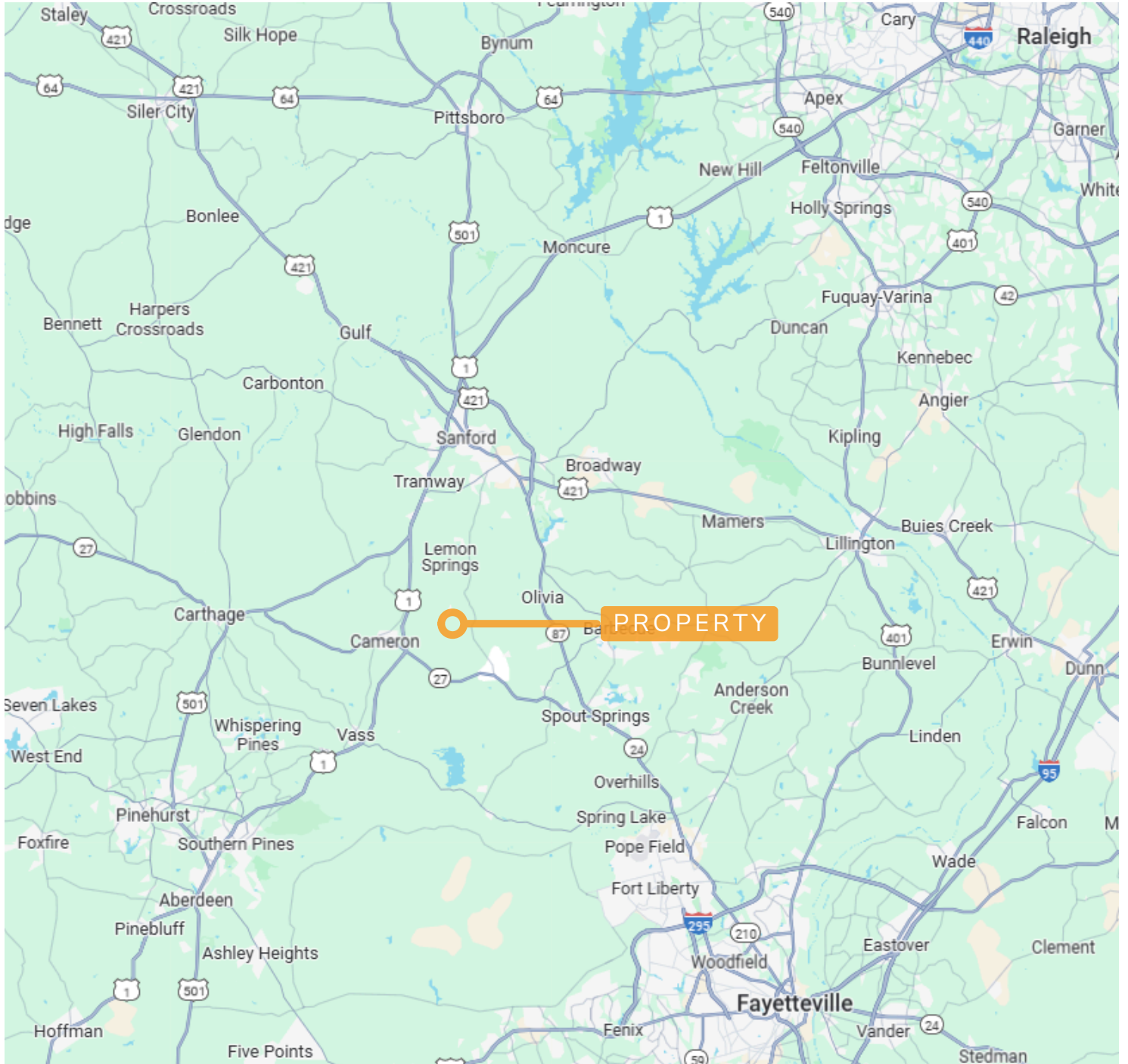


**MATTHEW WIMBERLY, RF, ACF**  
 NC BROKER  
 C: 910.639.0124  
 MATT@CSGNC.COM

**CAROLINA SUMMIT GROUP**  
 390 SW Broad Street  
 Southern Pines, NC 28387  
 910.684.5353  
 carolinasummitgroup.com



**LOCATION MAP**



**MATTHEW WIMBERLY, RF, ACF**  
NC BROKER  
C: 910.639.0124  
MATT@CSGNC.COM

**CAROLINA SUMMIT GROUP**  
390 SW Broad Street  
Southern Pines, NC 28387  
910.684.5353  
carolinasummitgroup.com