



801-887 DUCKS LANDING

ABERDEEN, NC 28315

40 TOWNHOME UNITS FOR SALE

CONTACTS



390 SW Broad Street
Southern Pines, NC 28387
910.684.5353
info@csgnc.com
www.carolinasummitgroup.com

George Manley

Principal Broker
910.603.8395
george@csgnc.com

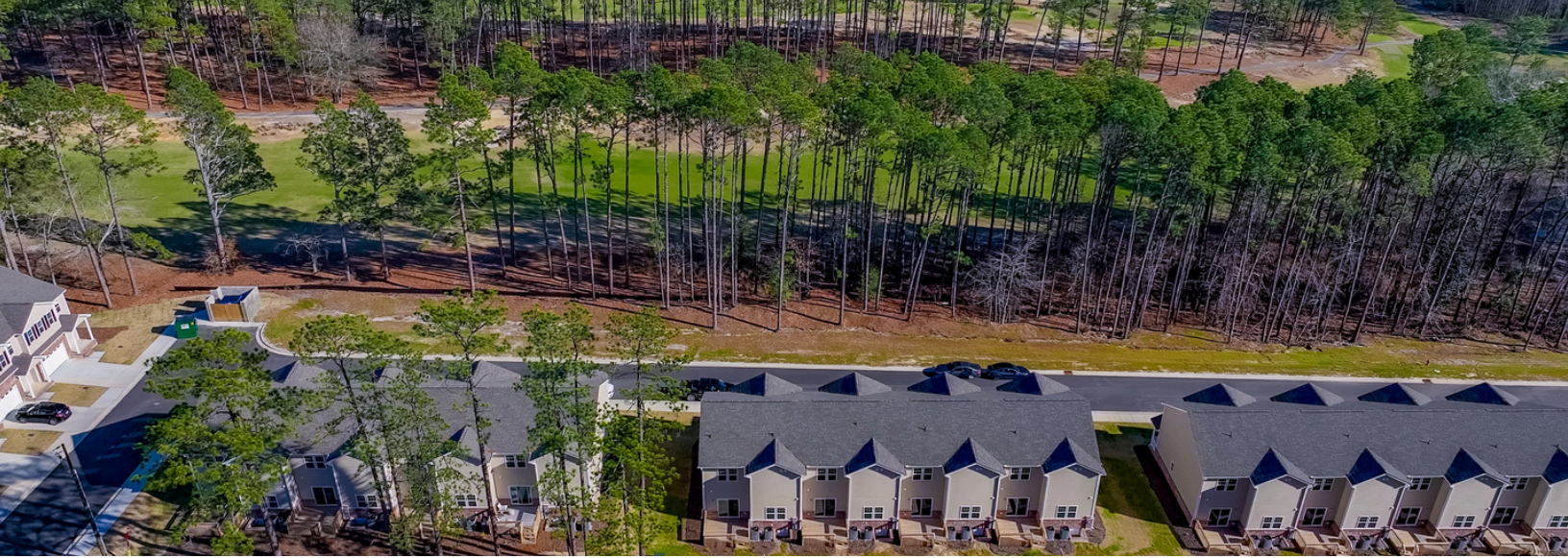
Holly Bell

Principal Broker
910.690.1065
holly@csgnc.com

DISCLAIMER

This marketing document contains confidential information intended solely for the recipient's use in evaluating the potential investment opportunity. By accepting this memorandum, the recipient agrees not to reproduce, distribute, or disclose its contents to any third party without the prior written consent of the issuer. All information contained herein is provided for the recipient's exclusive use and should be treated as strictly confidential. Carolina Summit Group does not accept any responsibility or liability for any errors, omissions, or inaccuracies contained in this document. Unauthorized use or disclosure of this information may result in legal action.





KEY HIGHLIGHTS

801-887 Ducks Landing, Aberdeen, NC 28315

\$14,000,000

Sale Price

5.8%

Proforma Cap Rate

Mixed

Occupancy

40

Townhome Units

2023

Year Built

PROPERTY SUMMARY

EXCEPTIONAL INVESTMENT OPPORTUNITY featuring 40 newly constructed, two-story townhome units located at 801-887 Ducks Landing in Aberdeen, within the sought-after Ducks Landing Townhome complex, which line the fairway of the 5th hole of The Southern Pines Golf Club, an original Donald Ross Course. This offering has a mix of long-term and short-term rental opportunities, presenting a flexible investment option for a buyer seeking to maximize potential returns.

These 3-bedroom, 2.5-bathroom townhomes feature open-concept living areas, premium kitchens with stainless steel appliances and granite countertops, and master suites with walk-in closets. A laundry room with hookups near the bedrooms adds practicality, while attached 2-car garages provide added convenience. The community's proximity to US-1/N Sandhills Blvd and Southern Pines Golf Club further enhances its appeal to discerning renters.

Located just minutes from Downtown Aberdeen and Downtown Southern Pines, these units provide unparalleled access to dining, shopping, and recreation. Additionally, the property is a short drive from Pinehurst, the renowned Home of American Golf, further enhancing its appeal to renters and investors alike in this high-demand area.

Buyers have the opportunity to acquire all 40 units in the Ducks Landing Townhome complex. This flexibility makes it an exceptional investment opportunity in a high-demand market. Seize the opportunity to invest in Ducks Landing and unlock the potential for exceptional growth and income!



TOWNHOME HIGHLIGHTS

BUILDINGS	TEN (10)
UNITS PER BUILDING	FOUR (4)
UNIT SIZE	+/- 1,691 SF PER UNIT
LOT SIZE	+/- 1,355 SF PER LOT
LEVELS	TWO (2)
UNIT TYPE	3 BED/2.5 BATH
GARAGE	ATTACHED, 2 CAR
KITCHEN APPLIANCES	STAINLESS STEEL
LONG TERM RENTAL	28 (UNFURNISHED)
SHORT TERM RENTAL	12 (FURNISHED)





NOTE: Layout is for illustrative purposes only.
Actual dimensions & details may vary.





DEMOGRAPHICS 10-MILE RADIUS

801-887 Ducks Landing, Aberdeen, NC 28315

73,929

Total Population

\$91,564

Median Household
Income

\$407,706

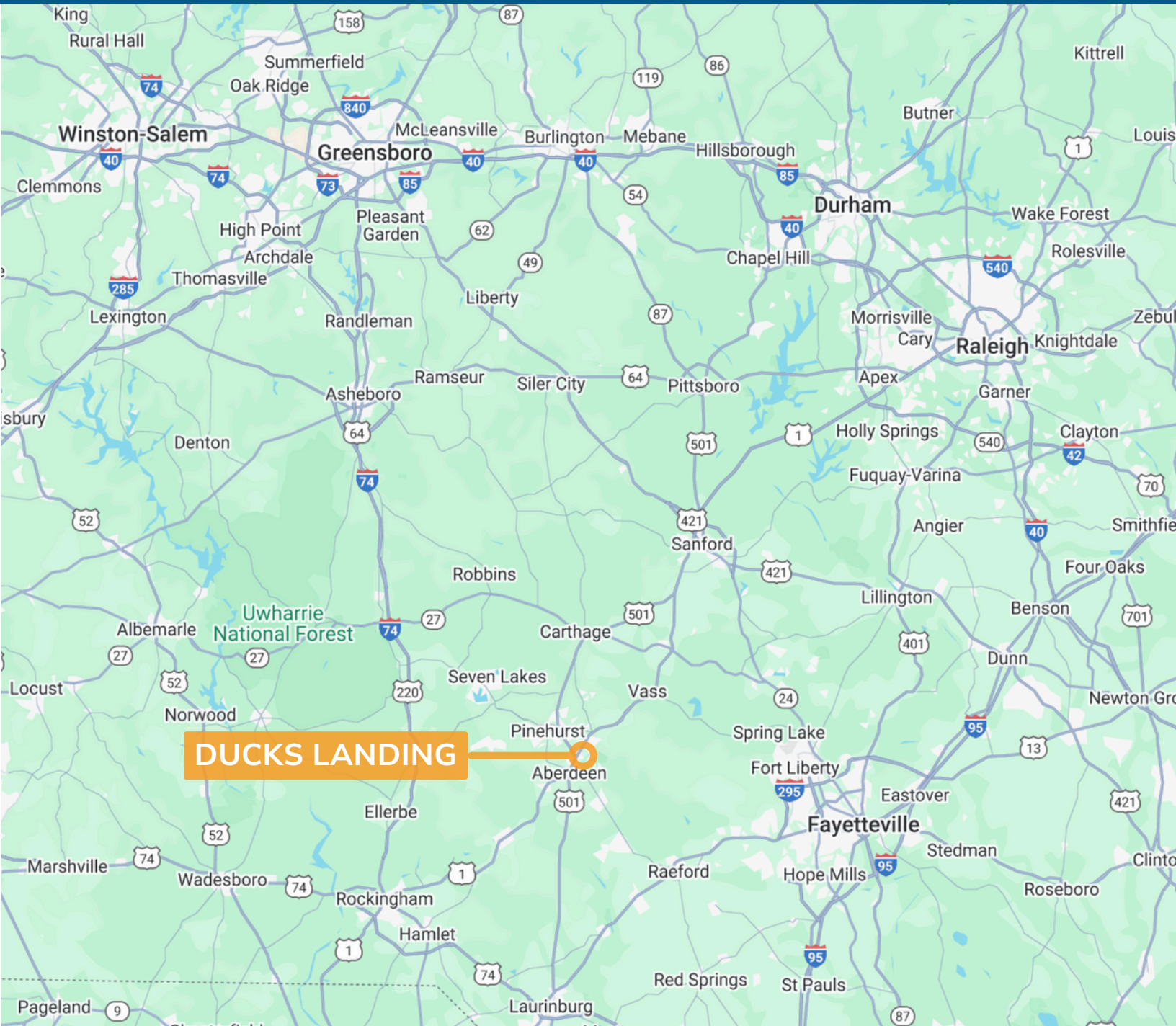
Median Home
Value

45.1

Median
Age

31,164

Civilian Labor Force
16+





COMMUNITY PROFILE

Geographic Location | Moore County is centrally located in North Carolina, bordered by Montgomery, Richmond, and Harnett Counties. It offers easy access via U.S. Highway 1 and is a short drive from Greensboro, Raleigh, and Charlotte.

Natural Beauty & Outdoor Recreation | The county features picturesque landscapes, including the renowned Pinehurst area, offering abundant opportunities for world-class golfing. Pinehurst, celebrated as the Home of American Golf, is home to Pinehurst Resort and the iconic Pinehurst No. 2 course. Pinehurst served as the anchor site for the U.S. Men's Open in 2024 and will host the prestigious tournament again in 2029, 2035, 2041, and 2047. The area's temperate climate encourages year-round outdoor activities for golf enthusiasts.

Rich History & Cultural Heritage | With roots dating back to the 18th century, Moore County is steeped in history. Pinehurst, originally established as a late 19th-century winter resort, remains a centerpiece of the county's cultural and historical identity. Cultural events and festivals celebrate its heritage, fostering community pride.

Educational Opportunities | Moore County School District provides quality education from elementary to high school, along with private schools. Higher education institutions nearby offer diverse academic programs for residents.

Community Services & Healthcare | The county provides comprehensive community services, including public safety and healthcare. Moore Regional Hospital and various community organizations enhance residents' quality of life.

Economic Development & Job Opportunities | Moore County's diverse economy includes tourism, retail, manufacturing, and healthcare. Pinehurst Resort is a cornerstone of the local economy, attracting golf enthusiasts and visitors worldwide. The business-friendly environment supports small businesses and provides job opportunities.

Vibrant Arts & Recreation Scene | The county has a thriving arts scene with local galleries and theaters, offering concerts and performances. Recreational programs promote social interaction and community spirit.