



## OFFICE SUITE FOR LEASE

### LEASE OVERVIEW

AVAILABLE | SUITE E

LEASE PRICE | \$1,400 PER MONTH

SQUARE FEET | +/- 1,500 SF

LEASE TYPE | MODIFIED GROSS

PARCEL ID | 00032804

This single-story multi-tenant office property has Suite E available for lease. Suite E includes three private offices, a conference room, a restroom with shower, and an additional room with built-in counters and sinks. The property offers paved on-site parking and is conveniently located just off the US-1 / N Sandhills Blvd exit, with access via Short Rd / Sandavis Rd from both Midland Rd and Yadkin Rd. Zoned OS (Office Services) and Urban Transition Highway Corridor.

**HOLLY BELL**  
NC BROKER  
C: 910.690.1065  
HOLLY@CSGNC.COM

**CAROLINA SUMMIT GROUP**  
390 SW Broad Street, Suite B  
Southern Pines, NC 28387  
910.684.5353  
carolinasummitgroup.com

**GEORGE MANLEY**  
NC BROKER  
C: 910.603.8395  
GEORGE@CSGNC.COM

**PHOTOS**

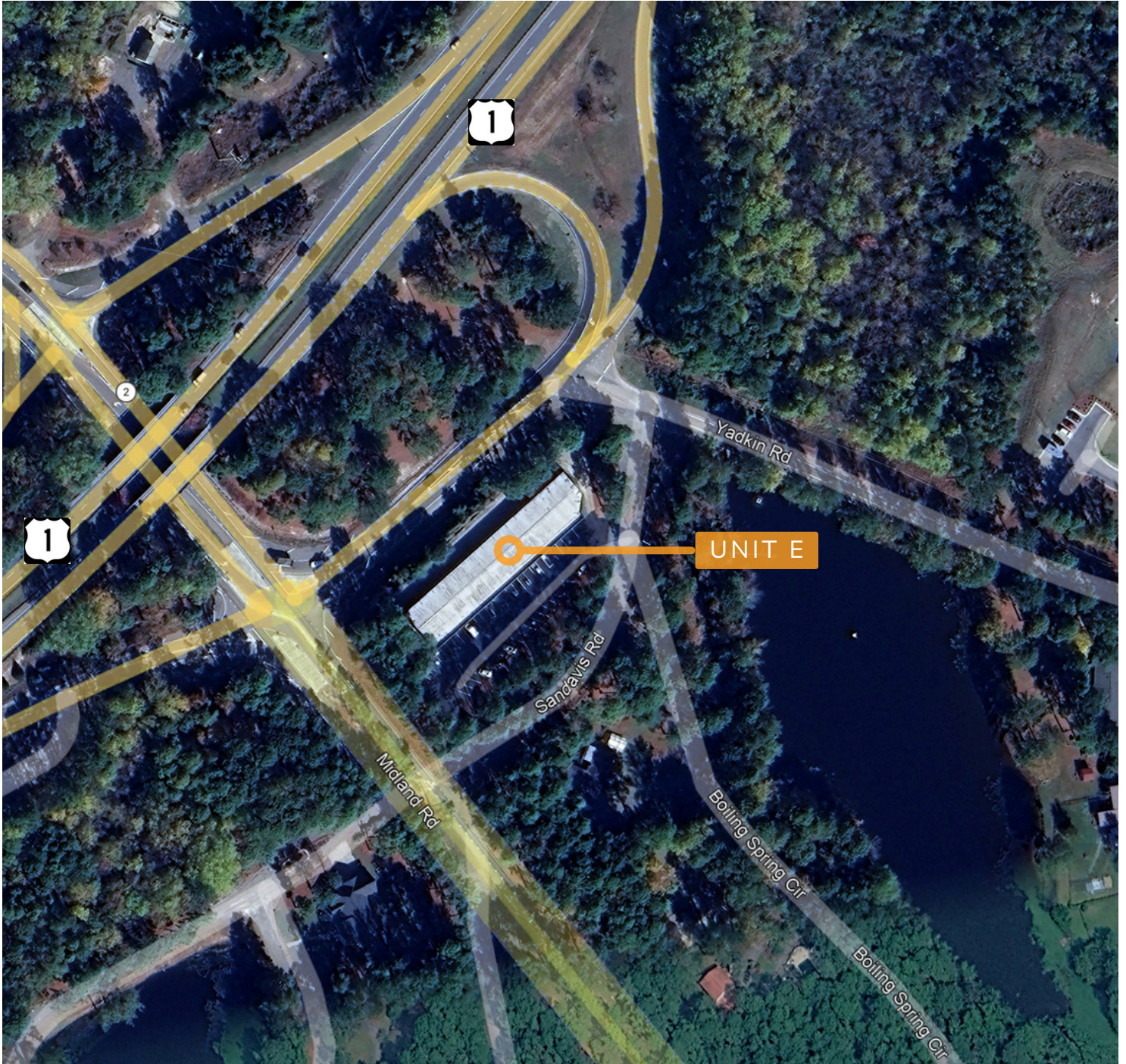


**HOLLY BELL**  
NC BROKER  
C: 910.690.1065  
HOLLY@CSGNC.COM

**CAROLINA SUMMIT GROUP**  
390 SW Broad Street, Suite B  
Southern Pines, NC 28387  
910.684.5353  
carolinasummitgroup.com

**GEORGE MANLEY**  
NC BROKER  
C: 910.603.8395  
GEORGE@CSGNC.COM

**AREA MAP**

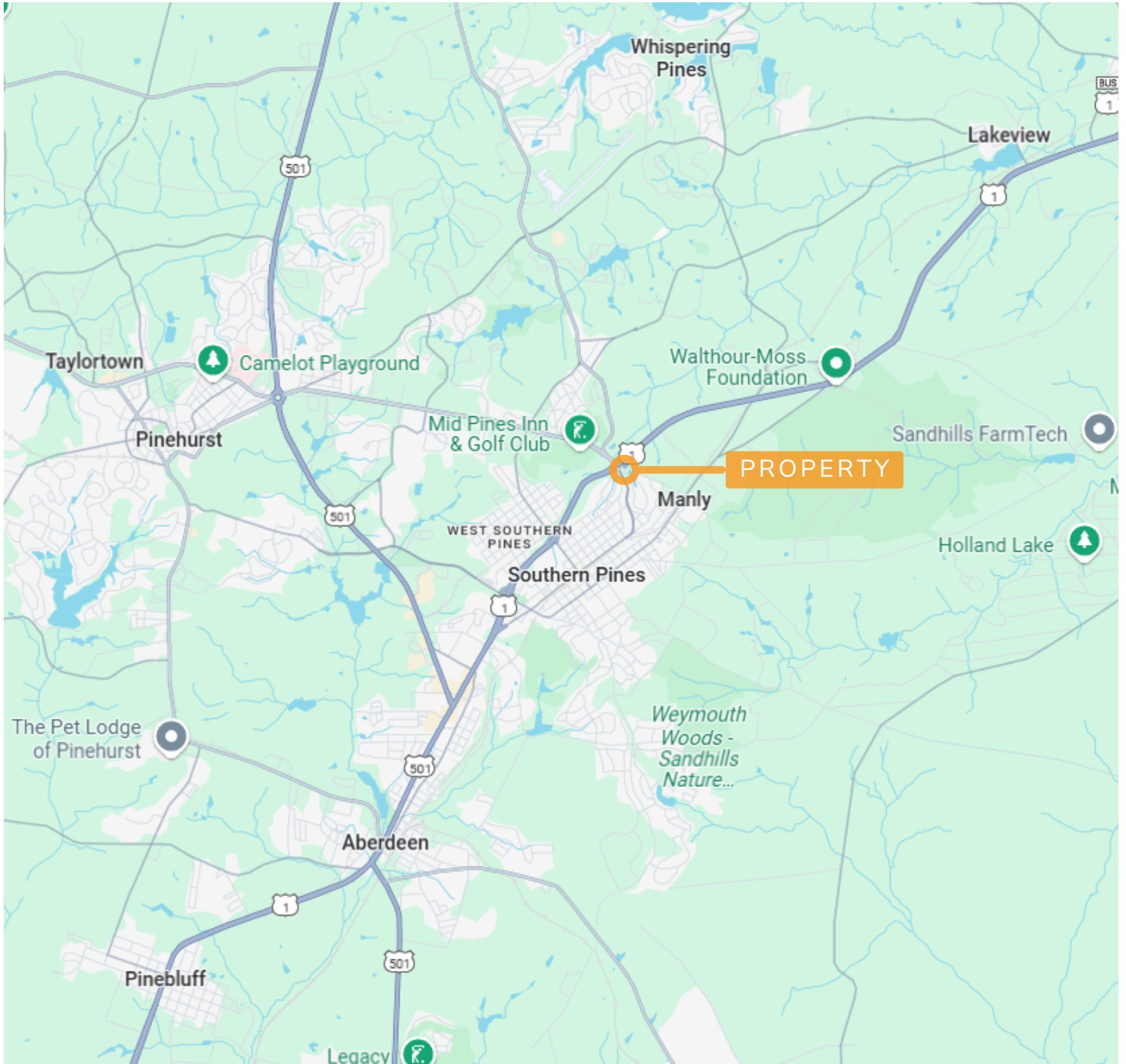


**HOLLY BELL**  
NC BROKER  
C: 910.690.1065  
HOLLY@CSGNC.COM

**CAROLINA SUMMIT GROUP**  
390 SW Broad Street, Suite B  
Southern Pines, NC 28387  
910.684.5353  
carolinasummitgroup.com

**GEORGE MANLEY**  
NC BROKER  
C: 910.603.8395  
GEORGE@CSGNC.COM

**LOCATION MAP**



**HOLLY BELL**  
NC BROKER  
C: 910.690.1065  
HOLLY@CSGNC.COM

**CAROLINA SUMMIT GROUP**  
390 SW Broad Street, Suite B  
Southern Pines, NC 28387  
910.684.5353  
carolinasummitgroup.com

**GEORGE MANLEY**  
NC BROKER  
C: 910.603.8395  
GEORGE@CSGNC.COM