



## 19 ACRES FOR SALE IN LEE COUNTY

### PROPERTY OVERVIEW

**PRICE | \$388,000**

**PIN | 9663-91-5233-00**

**ACREAGE | +/- 19 ACRES**

**ZONING | RA**

+/- 19.4 acres located off Poplar Springs Church Rd and located on both sides of Alma Brown Road, a private dirt road in Lee County, PIN 9663-91-5233-00. Excellent location for residential subdivision. Municipal water available. Mature timber on the property. Additional parcels are available nearby off Poplar Springs Church Road. Short commute to Sanford, Moncure, and surrounding areas. Within half a mile of a voluntary ag district.

**MATTHEW WIMBERLY, RF, ACF**  
NC BROKER  
C: 910.639.0124  
MATT@CSGNC.COM

**CAROLINA SUMMIT GROUP**  
390 SW Broad Street  
Southern Pines, NC 28387  
910.684.5353  
carolinasummitgroup.com



**UTILITIES MAP**

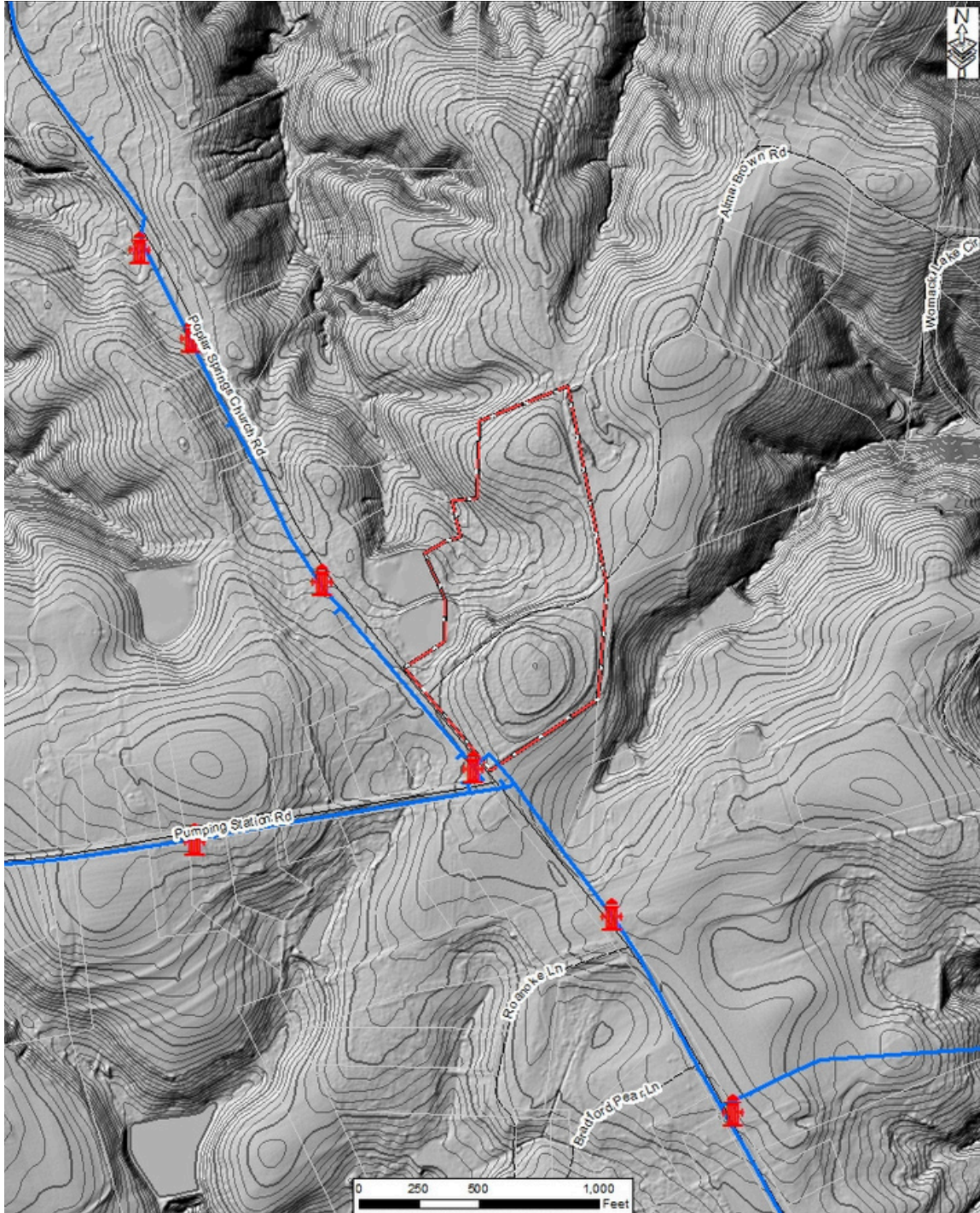


**MATTHEW WIMBERLY, RF, ACF**  
NC BROKER  
C: 910.639.0124  
MATT@CSGNC.COM

**CAROLINA SUMMIT GROUP**  
390 SW Broad Street  
Southern Pines , NC 28387  
910.684.5353  
carolinasummitgroup.com



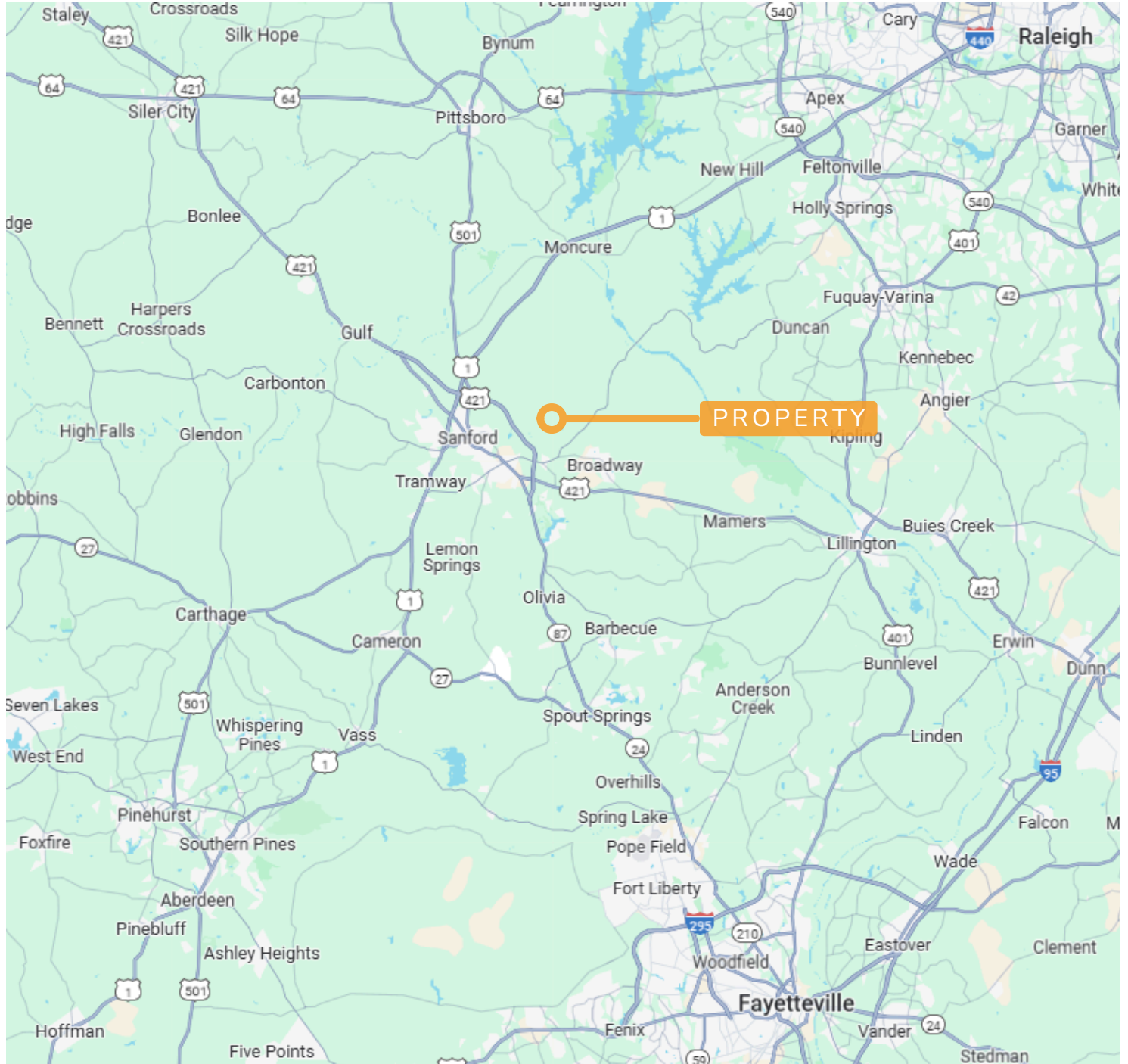
**TOPO MAP**



**MATTHEW WIMBERLY, RF, ACF**  
NC BROKER  
C: 910.639.0124  
MATT@CSGNC.COM

**CAROLINA SUMMIT GROUP**  
390 SW Broad Street  
Southern Pines, NC 28387  
910.684.5353  
carolinasummitgroup.com

## LOCATION MAP



**MATTHEW WIMBERLY, RF, ACF**  
NC BROKER  
C: 910.639.0124  
MATT@CSGNC.COM

**CAROLINA SUMMIT GROUP**  
390 SW Broad Street  
Southern Pines, NC 28387  
910.684.5353  
carolinasummitgroup.com