



OFFICE SUITE FOR LEASE

LEASE OVERVIEW

AVAILABLE | SUITE E

LEASE PRICE | \$17 PER SF

LEASE TYPE | NNN

SQUARE FEET | 1,235 +/- SF

ZONING | GENERAL BUSINESS

Office space available for lease in a well-maintained multi-tenant property located on Old US Hwy 1, just minutes from downtown Southern Pines. Suite E offers approximately 1,235 SF and includes a reception area, four private offices plus a fifth office or conference room, a private restroom with shower, and a kitchenette. The site offers ample parking for tenants and guests. Additional TICAM fees apply.

HOLLY BELL
NC BROKER
C: 910.690.1065
HOLLY@CSGNC.COM

CAROLINA SUMMIT GROUP
390 SW Broad Street, Suite B
Southern Pines, NC 28387
910.684.5353
carolinasummitgroup.com

GEORGE MANLEY
NC BROKER
C: 910.603.8395
GEORGE@CSGNC.COM

PHOTOS

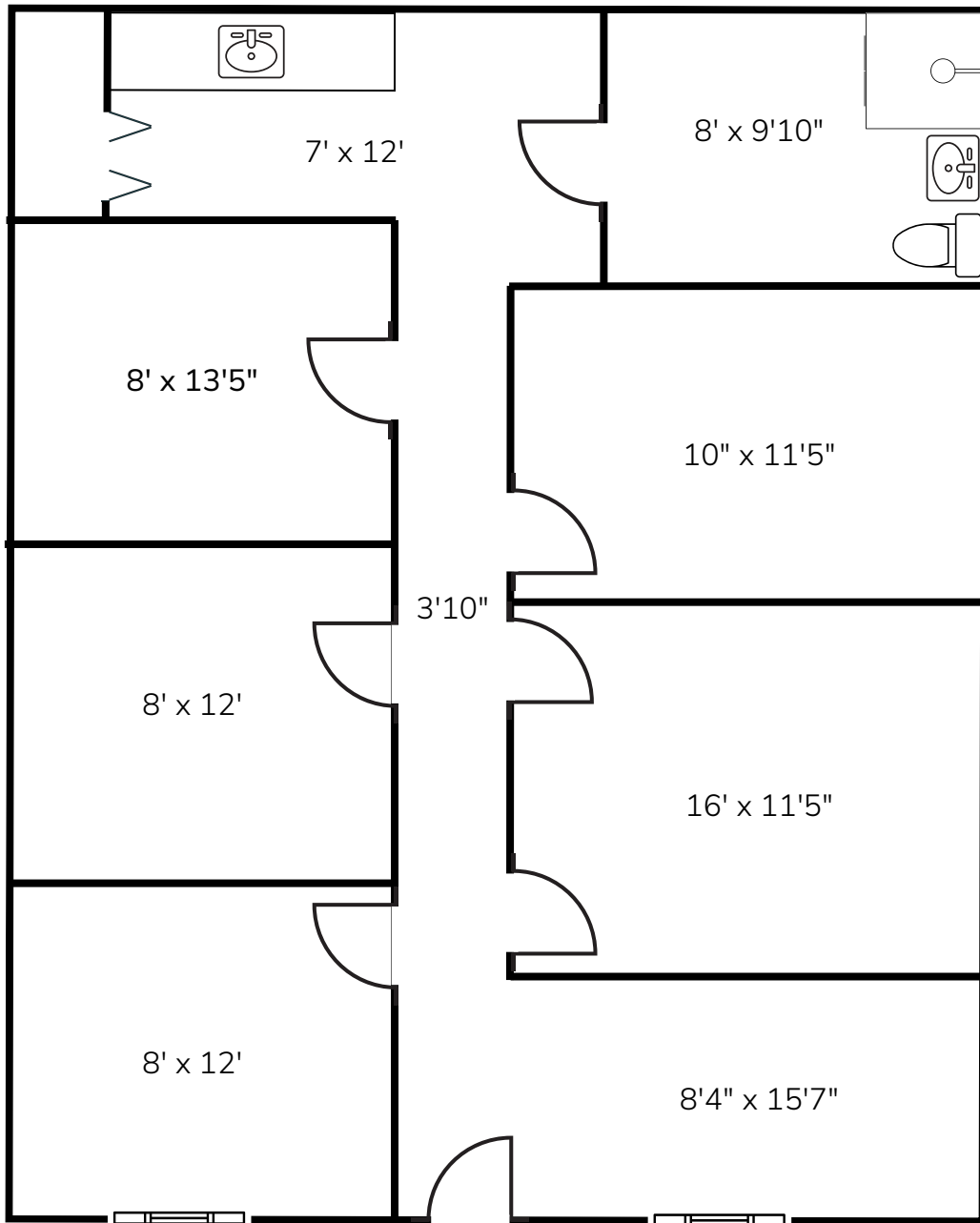


HOLLY BELL
 NC BROKER
 C: 910.690.1065
HOLLY@CSGNC.COM

CAROLINA SUMMIT GROUP
 390 SW Broad Street, Suite B
 Southern Pines , NC 28387
 910.684.5353
carolinasummitgroup.com

GEORGE MANLEY
 NC BROKER
 C: 910.603.8395
GEORGE@CSGNC.COM

FLOOR PLAN



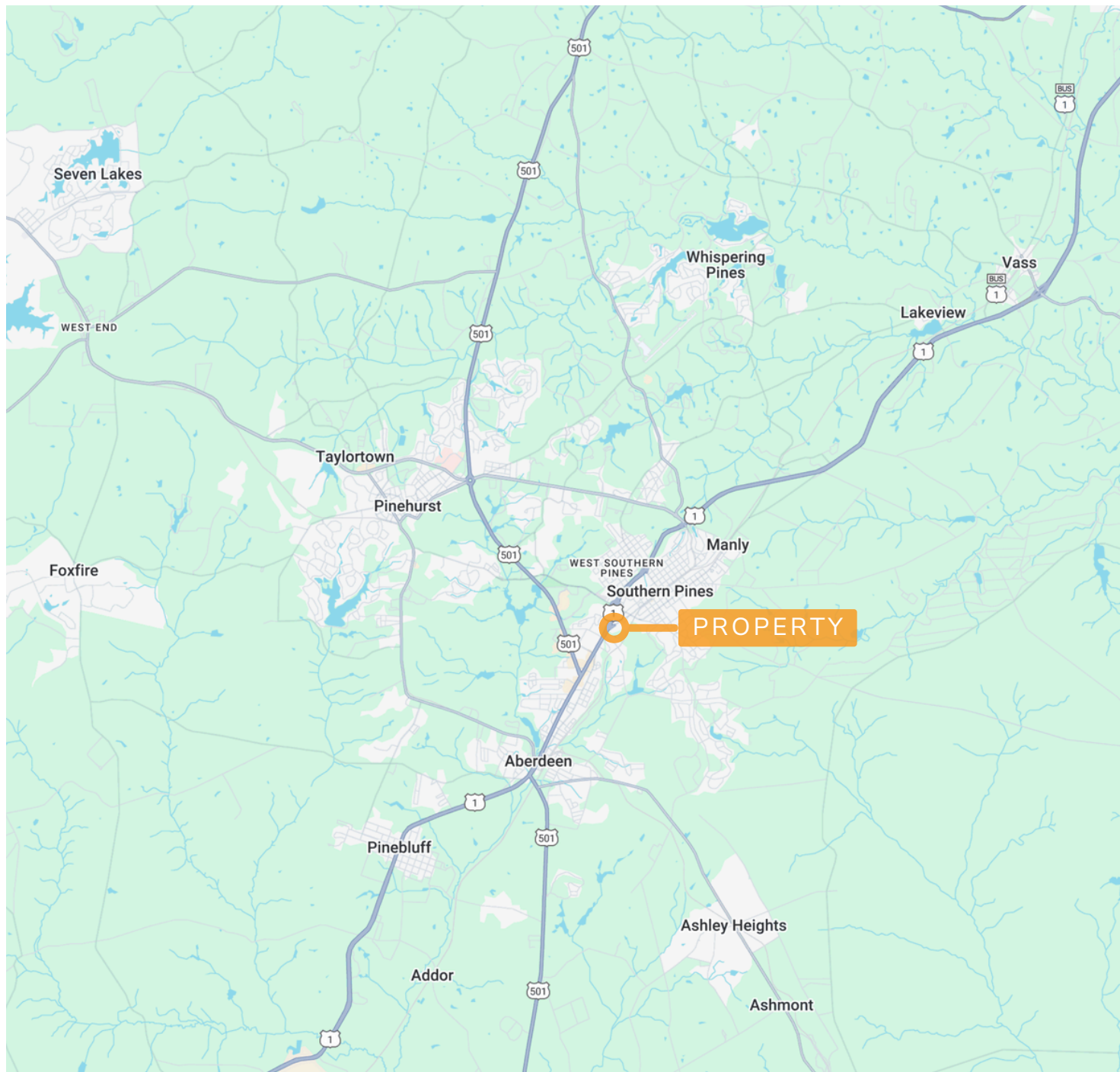
NOTE: Floor plan is for illustrative purposes only.
Actual dimensions & details may vary. Not to scale.

HOLLY BELL
NC BROKER
C: 910.690.1065
HOLLY@CSGNC.COM

CAROLINA SUMMIT GROUP
390 SW Broad Street, Suite B
Southern Pines, NC 28387
910.684.5353
carolinasummitgroup.com

GEORGE MANLEY
NC BROKER
C: 910.603.8395
GEORGE@CSGNC.COM

LOCATION MAP



HOLLY BELL
NC BROKER
C: 910.690.1065
HOLLY@CSGNC.COM

CAROLINA SUMMIT GROUP
390 SW Broad Street, Suite B
Southern Pines, NC 28387
910.684.5353
carolinasummitgroup.com

GEORGE MANLEY
NC BROKER
C: 910.603.8395
GEORGE@CSGNC.COM