



INDIVIDUAL OFFICE FOR LEASE

LEASE OVERVIEW

AVAILABLE SUITE | SUITE 10

LEASE PRICE | \$900 PER MONTH

SQUARE FEET | 198 +/- SF

LEASE TYPE | MODIFIED GROSS

ZONING | CB & HISTORIC

Great opportunity to lease a private second-floor office in Downtown Southern Pines, just steps from local shops, dining, and the post office. Suite 10 offers approximately 198 SF and is accessed via a shared stairwell. Utilities including electric, water, and sewer are included.

HOLLY BELL
NC BROKER
C: 910.690.1065
HOLLY@CSGNC.COM

CAROLINA SUMMIT GROUP
390 SW Broad Street, Suite B
Southern Pines, NC 28387
910.684.5353
carolinasmithgroup.com

GEORGE MANLEY
NC BROKER
C: 910.603.8395
GEORGE@CSGNC.COM

PHOTOS

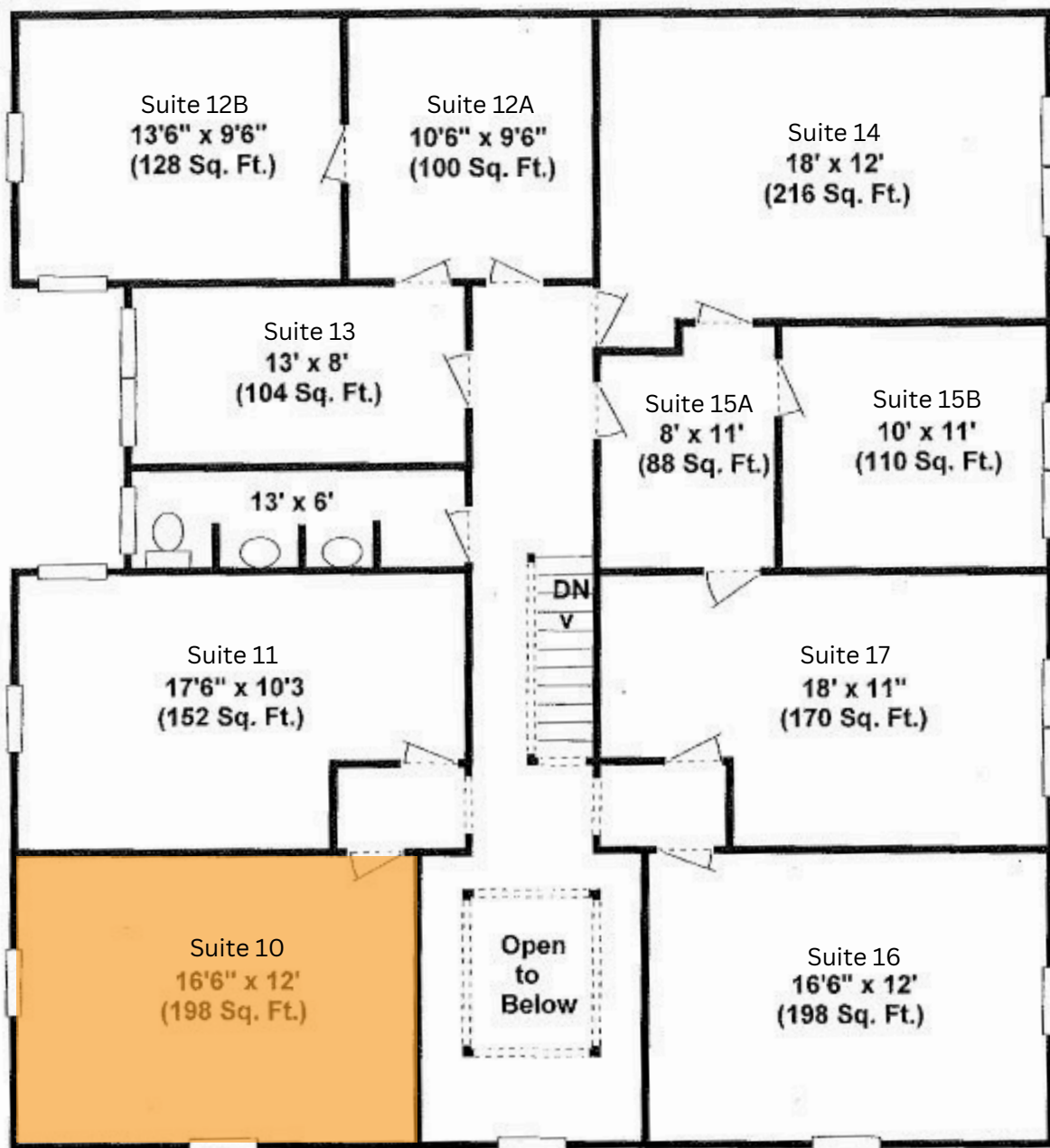


HOLLY BELL
 NC BROKER
 C: 910.690.1065
 HOLLY@CSGNC.COM

CAROLINA SUMMIT GROUP
 390 SW Broad Street, Suite B
 Southern Pines, NC 28387
 910.684.5353
 carolinasummitgroup.com

GEORGE MANLEY
 NC BROKER
 C: 910.603.8395
 GEORGE@CSGNC.COM

FLOOR PLANS | SUITE 10



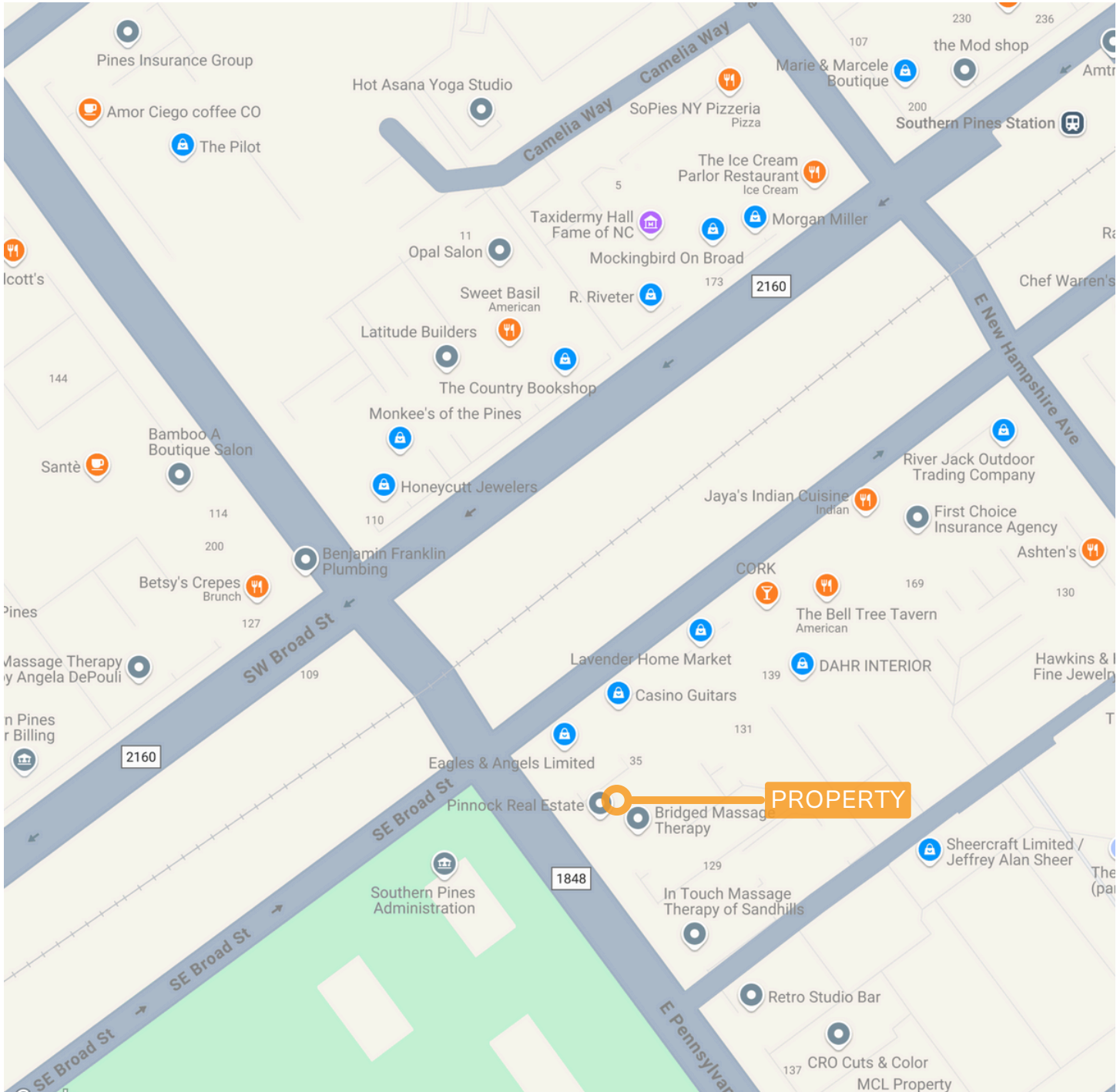
NOTE: Floor plan is for illustrative purposes only.
 Actual dimensions & details may vary.

HOLLY BELL
 NC BROKER
 C: 910.690.1065
 HOLLY@CSGNC.COM

CAROLINA SUMMIT GROUP
 390 SW Broad Street, Suite B
 Southern Pines, NC 28387
 910.684.5353
 carolinasummitgroup.com

GEORGE MANLEY
 NC BROKER
 C: 910.603.8395
 GEORGE@CSGNC.COM

RETAIL MAP

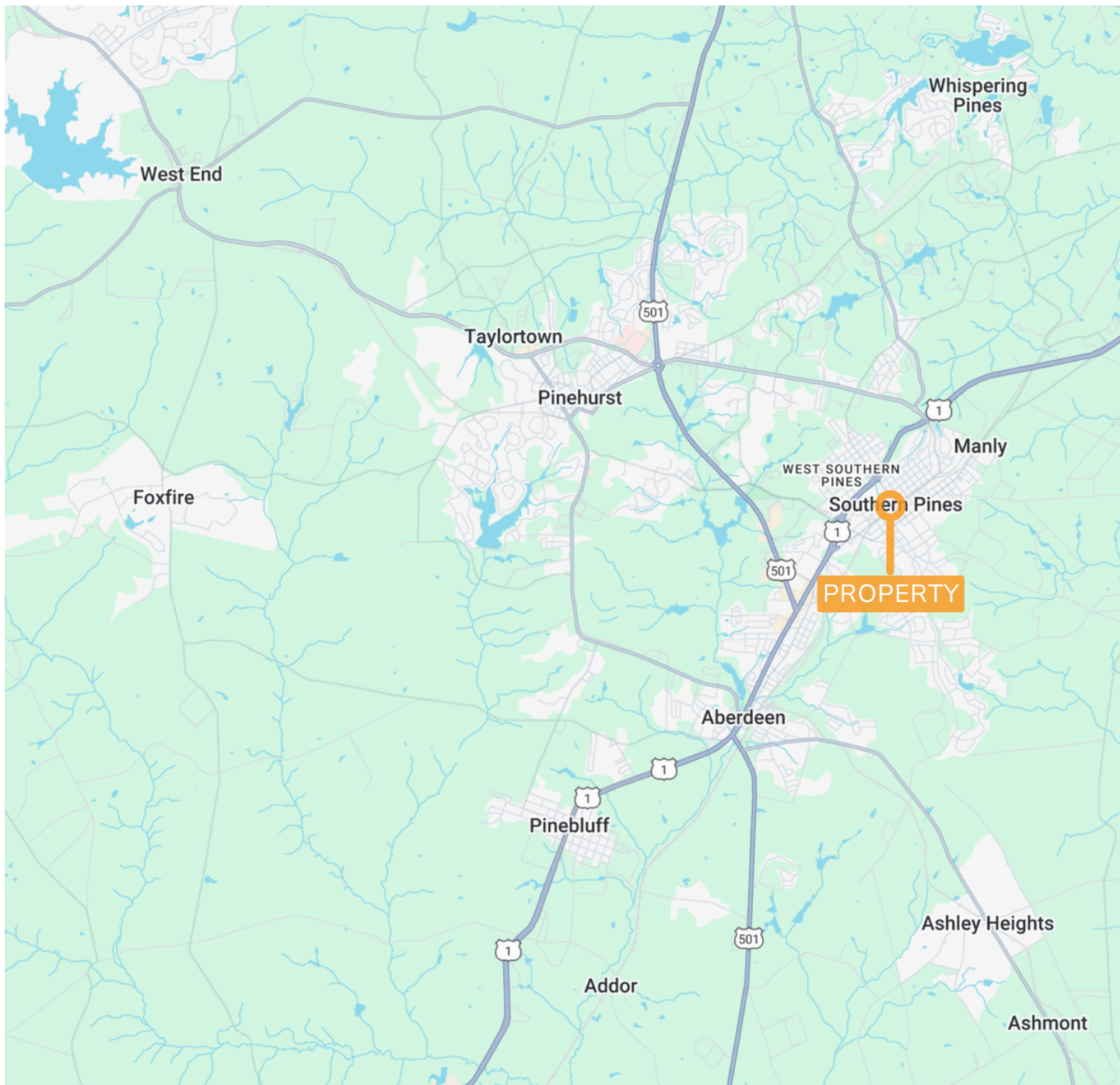


HOLLY BELL
 NC BROKER
 C: 910.690.1065
 HOLLY@CSGNC.COM

CAROLINA SUMMIT GROUP
 390 SW Broad Street, Suite B
 Southern Pines, NC 28387
 910.684.5353
 carolinasummitgroup.com

GEORGE MANLEY
 NC BROKER
 C: 910.603.8395
 GEORGE@CSGNC.COM

LOCATION MAP



HOLLY BELL
NC BROKER
C: 910.690.1065
HOLLY@CSGNC.COM

CAROLINA SUMMIT GROUP
390 SW Broad Street, Suite B
Southern Pines, NC 28387
910.684.5353
carolinasummitgroup.com

GEORGE MANLEY
NC BROKER
C: 910.603.8395
GEORGE@CSGNC.COM