



## OFFICE SUITE FOR LEASE

### LEASE OVERVIEW

**AVAILABLE | SUITE B**

**LEASE PRICE | \$17 PER SF**

**LEASE TYPE | NNN**

**SQUARE FEET | 1,445 +/- SF**

**ZONING | GENERAL BUSINESS**

Office space available for lease in a well-maintained multi-tenant property located on Old US Hwy 1, just minutes from downtown Southern Pines. Suite B offers approximately 1,445 SF and includes a reception area, four private offices plus a fifth office or conference room, a private restroom, and a kitchenette. The site offers ample parking for tenants and guests. Additional TICAM fees apply.

**HOLLY BELL**  
NC BROKER  
C: 910.690.1065  
HOLLY@CSGNC.COM

**CAROLINA SUMMIT GROUP**  
390 SW Broad Street, Suite B  
Southern Pines, NC 28387  
910.684.5353  
carolinasummitgroup.com

**GEORGE MANLEY**  
NC BROKER  
C: 910.603.8395  
GEORGE@CSGNC.COM



**PHOTOS**

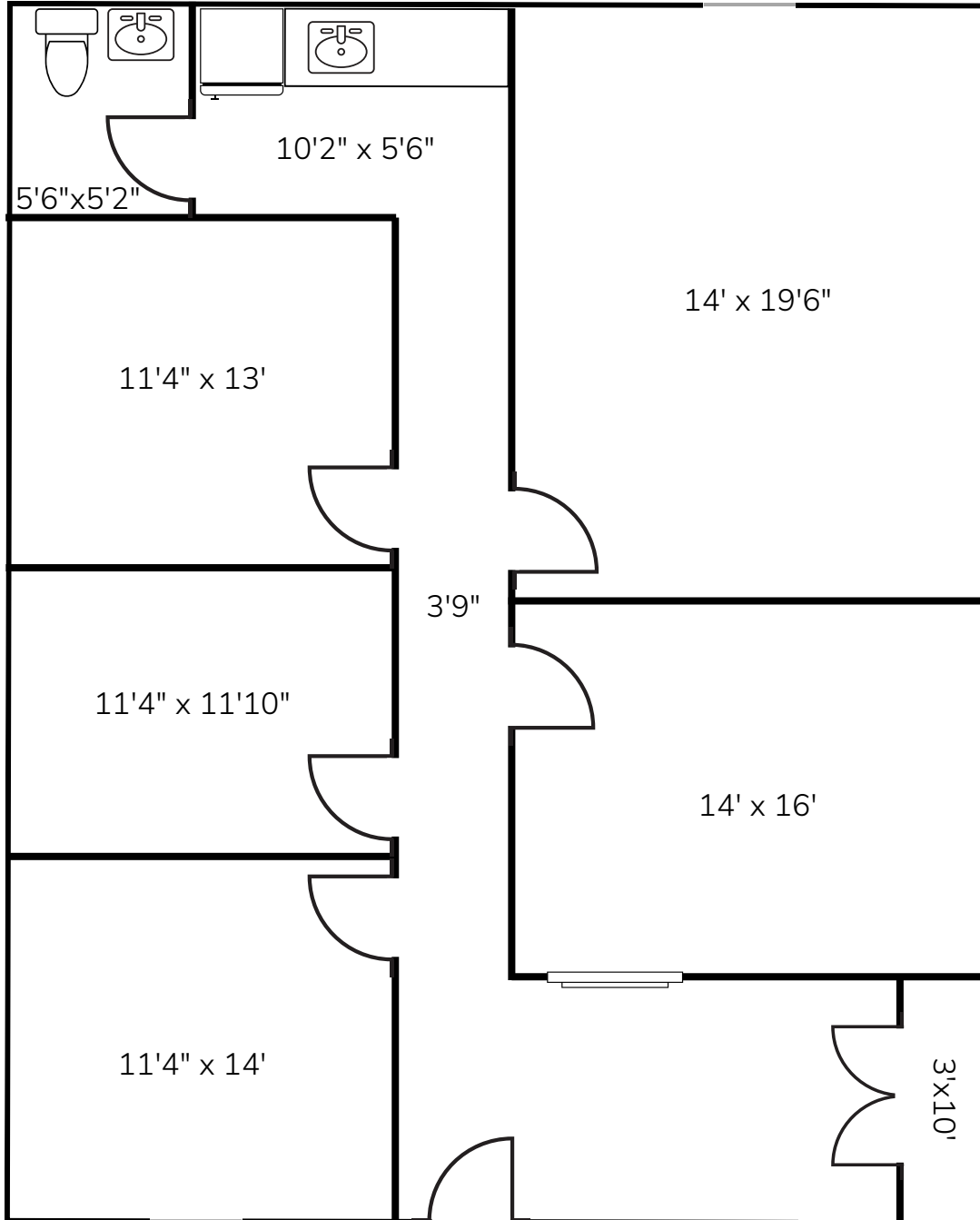


**HOLLY BELL**  
 NC BROKER  
 C: 910.690.1065  
[HOLLY@CSGNC.COM](mailto:HOLLY@CSGNC.COM)

**CAROLINA SUMMIT GROUP**  
 390 SW Broad Street, Suite B  
 Southern Pines, NC 28387  
 910.684.5353  
[carolinasummitgroup.com](http://carolinasummitgroup.com)

**GEORGE MANLEY**  
 NC BROKER  
 C: 910.603.8395  
[GEORGE@CSGNC.COM](mailto:GEORGE@CSGNC.COM)

## FLOOR PLAN



NOTE: Floor plan is for illustrative purposes only.  
 Actual dimensions & details may vary. Not to scale.

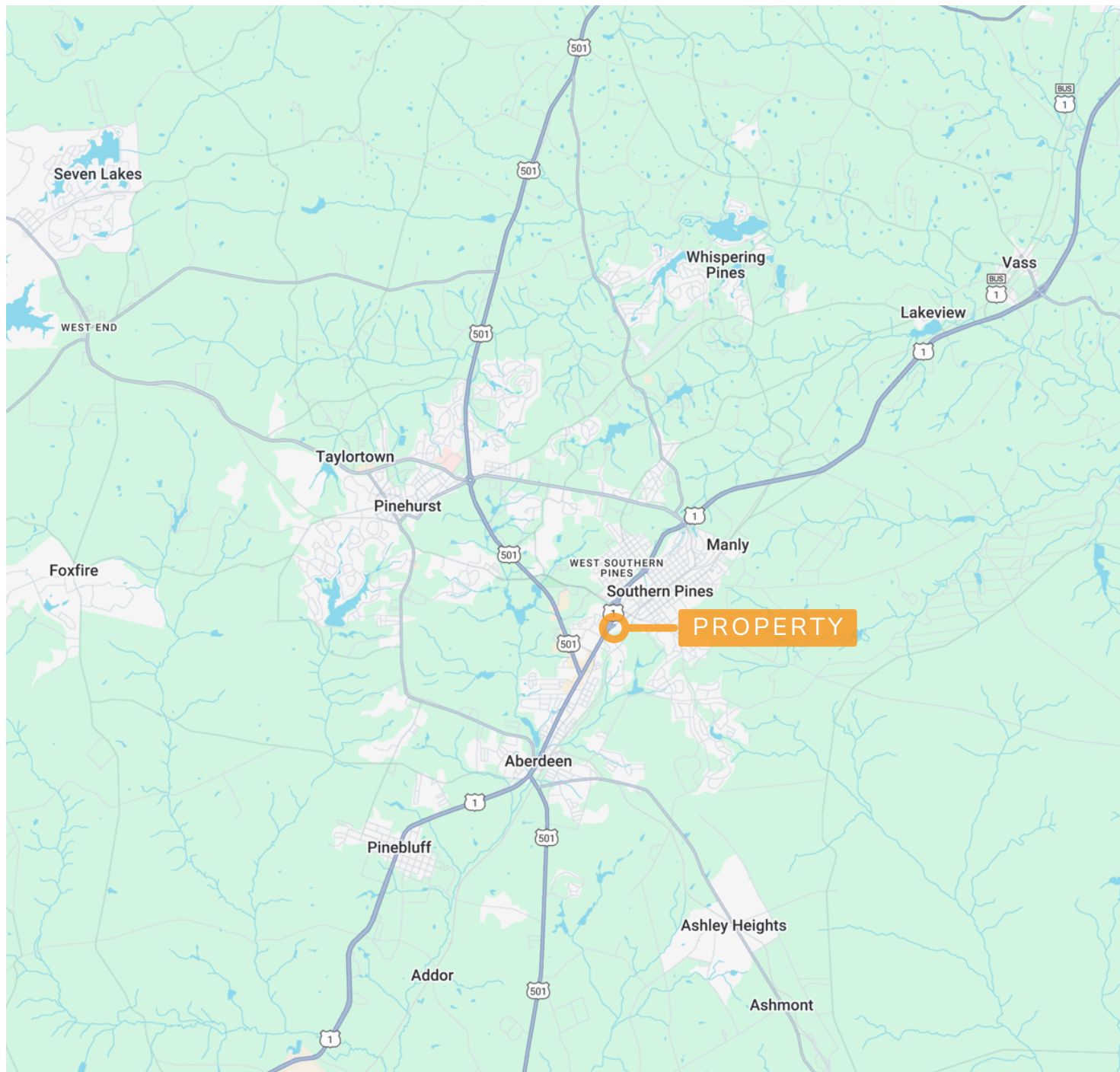
**HOLLY BELL**  
 NC BROKER  
 C: 910.690.1065  
 HOLLY@CSGNC.COM

**CAROLINA SUMMIT GROUP**  
 390 SW Broad Street, Suite B  
 Southern Pines, NC 28387  
 910.684.5353  
 carolinasummitgroup.com

**GEORGE MANLEY**  
 NC BROKER  
 C: 910.603.8395  
 GEORGE@CSGNC.COM



## LOCATION MAP



**HOLLY BELL**  
NC BROKER  
C: 910.690.1065  
HOLLY@CSGNC.COM

**CAROLINA SUMMIT GROUP**  
390 SW Broad Street, Suite B  
Southern Pines, NC 28387  
910.684.5353  
carolinasummitgroup.com

**GEORGE MANLEY**  
NC BROKER  
C: 910.603.8395  
GEORGE@CSGNC.COM