



COMMERCIAL BUILDING FOR SALE

PROPERTY OVERVIEW

PRICE | \$950,000

PARCEL ID | 00054344

SQUARE FEET | +/- 15,755 SF

ACREAGE | +/- 0.22 ACRES

ZONING | CENTRAL BUSINESS (CB)

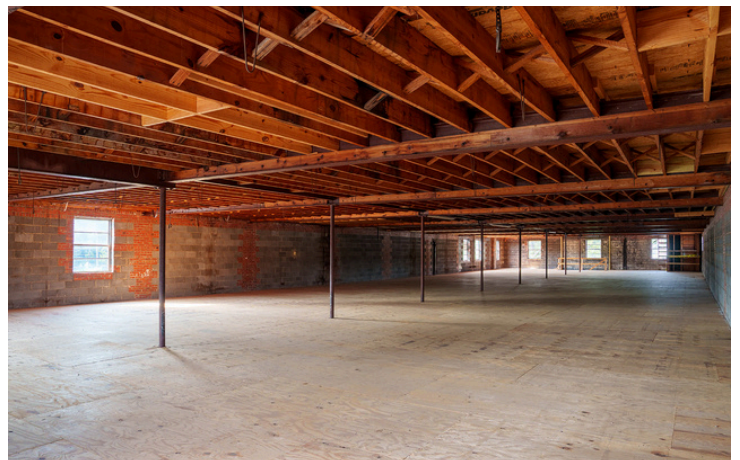
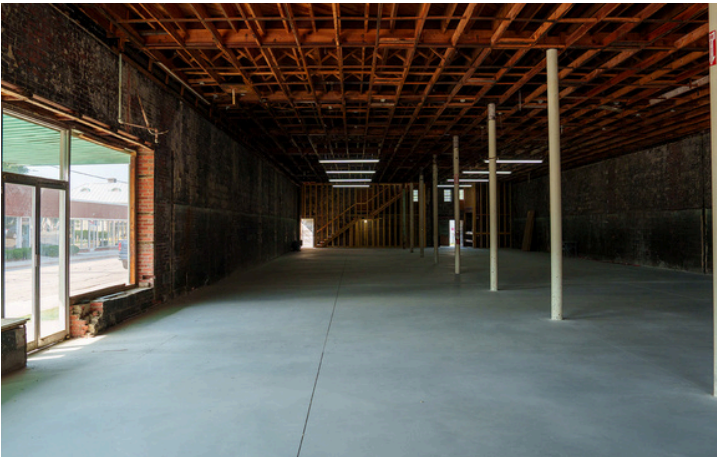
Prime commercial opportunity in the heart of downtown Aberdeen's growing district. This +/- 15,755 SF building occupies a prominent corner at West Main and North Poplar Street, offering excellent visibility. The property includes 7,094 SF on both the ground and second floors, plus a 1,567 SF basement, all situated on +/- 0.22 acres. The building features a unique curved storefront window on the main level. Ideal for a variety of potential uses, including Food & Beverage, Retail, or Fitness. The site was formerly planned as Junction Food Hall. Additional planning and engineering documents are available to buyers for a fee.

HOLLY BELL
NC BROKER
C: 910.690.1065
HOLLY@CSGNC.COM

CAROLINA SUMMIT GROUP
390 SW Broad Street, Suite B
Southern Pines, NC 28387
910.684.5353
carolinasummitgroup.com

GEORGE MANLEY
NC BROKER
C: 910.603.8395
GEORGE@CSGNC.COM

PHOTOS



HOLLY BELL
NC BROKER
C: 910.690.1065
HOLLY@CSGNC.COM

CAROLINA SUMMIT GROUP
390 SW Broad Street, Suite B
Southern Pines, NC 28387
910.684.5353
carolinasummitgroup.com

GEORGE MANLEY
NC BROKER
C: 910.603.8395
GEORGE@CSGNC.COM

RENDERINGS



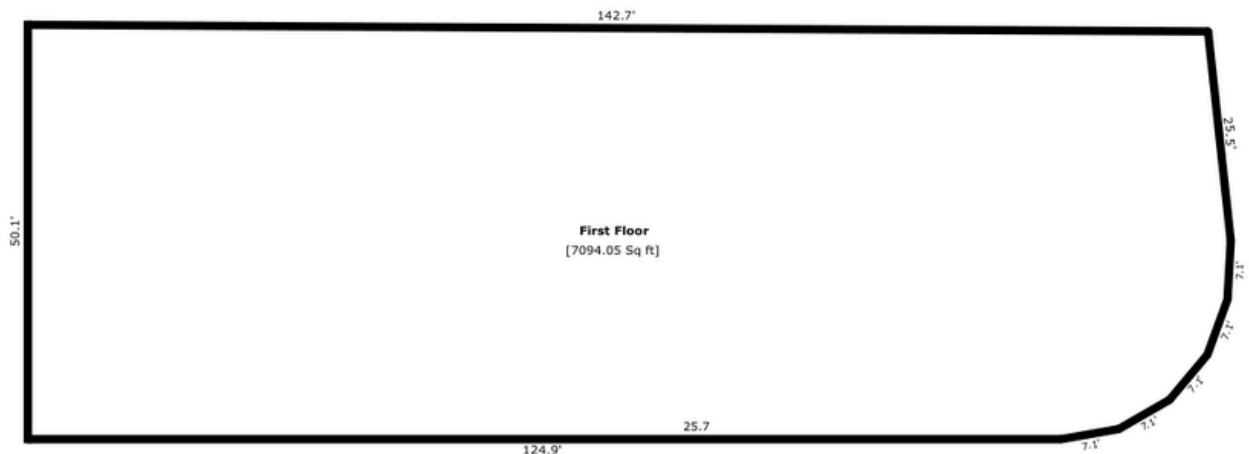
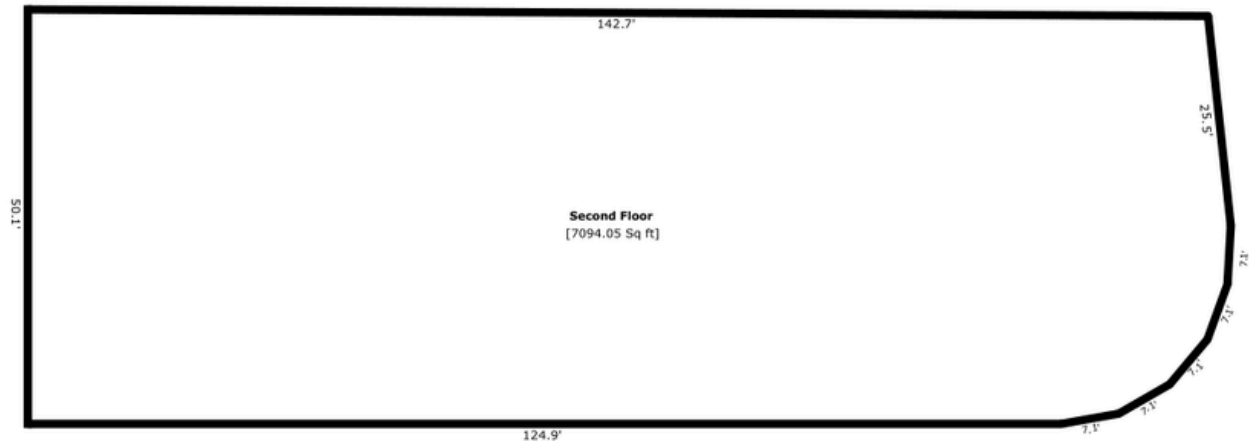
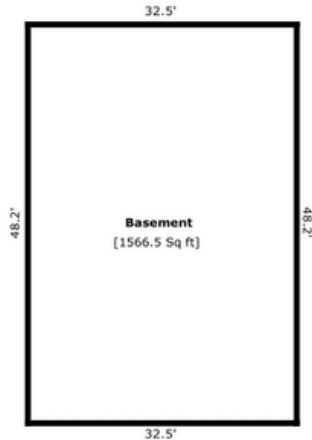
HOLLY BELL
 NC BROKER
 C: 910.690.1065
HOLLY@CSGNC.COM

CAROLINA SUMMIT GROUP
 390 SW Broad Street, Suite B
 Southern Pines, NC 28387
 910.684.5353
carolinasummitgroup.com

GEORGE MANLEY
 NC BROKER
 C: 910.603.8395
GEORGE@CSGNC.COM



Square Footage (Exterior Wall)
Above Grade: 14,188 SF
Below Grade: 1,567 SF
Total Interior SF: 15,755 SF



HOLLY BELL
NC BROKER
C: 910.690.1065
HOLLY@CSGNC.COM

CAROLINA SUMMIT GROUP
390 SW Broad Street, Suite B
Southern Pines , NC 28387
910.684.5353
carolinasummitgroup.com

GEORGE MANLEY
NC BROKER
C: 910.603.8395
GEORGE@CSGNC.COM

LOCAL AREA MAP



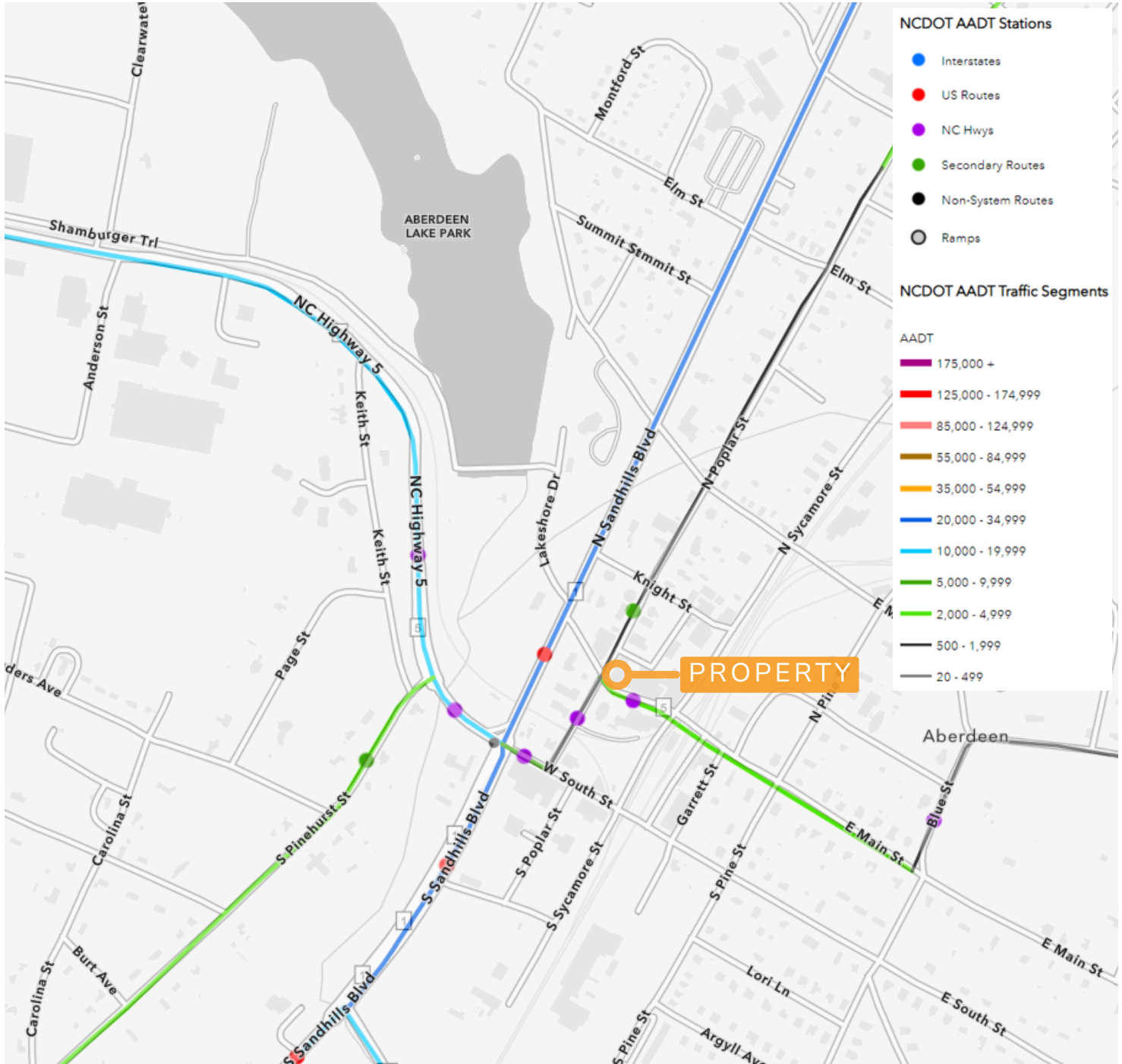
NOTE: Plat is for illustrative purposes only.
Actual dimensions & details may vary.

HOLLY BELL
NC BROKER
C: 910.690.1065
HOLLY@CSGNC.COM

CAROLINA SUMMIT GROUP
390 SW Broad Street, Suite B
Southern Pines, NC 28387
910.684.5353
carolinasummitgroup.com

GEORGE MANLEY
NC BROKER
C: 910.603.8395
GEORGE@CSGNC.COM

TRAFFIC MAP

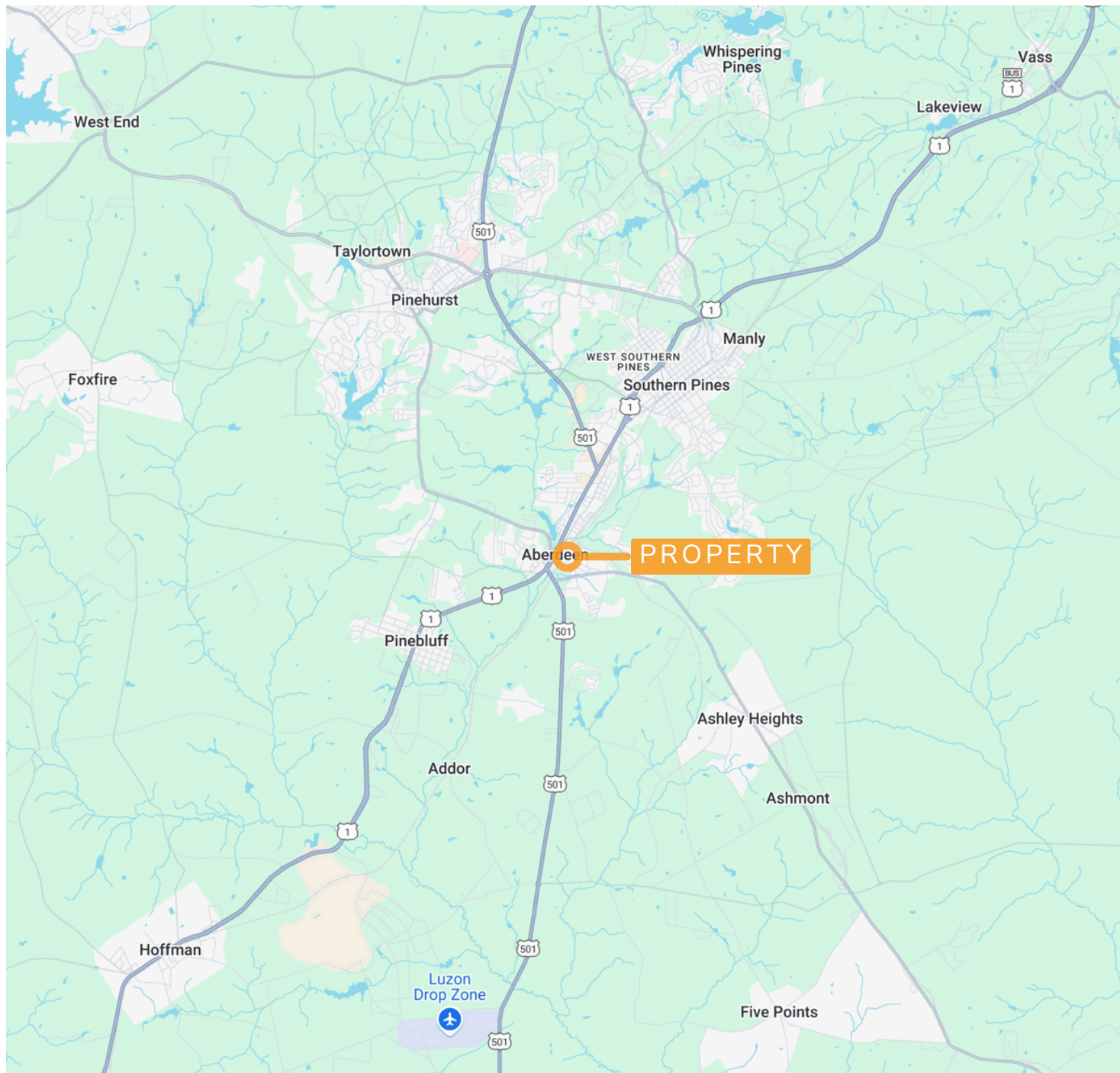


HOLLY BELL
 NC BROKER
 C: 910.690.1065
HOLLY@CSGNC.COM

CAROLINA SUMMIT GROUP
 390 SW Broad Street, Suite B
 Southern Pines, NC 28387
 910.684.5353
carolinasummitgroup.com

GEORGE MANLEY
 NC BROKER
 C: 910.603.8395
GEORGE@CSGNC.COM

LOCATION MAP



HOLLY BELL
NC BROKER
C: 910.690.1065
HOLLY@CSGNC.COM

CAROLINA SUMMIT GROUP
390 SW Broad Street, Suite B
Southern Pines, NC 28387
910.684.5353
carolinasummitgroup.com

GEORGE MANLEY
NC BROKER
C: 910.603.8395
GEORGE@CSGNC.COM