



OFFICE & WAREHOUSE FOR LEASE

LEASE OVERVIEW

AVAILABLE | UNIT 307

LEASE PRICE | \$3,750 (\$10/SF)

LEASE TYPE | MODIFIED GROSS

SQUARE FEET | 4,500 +/- SF

PARCEL ID | 00055731

ZONING | LIGHT INDUSTRIAL

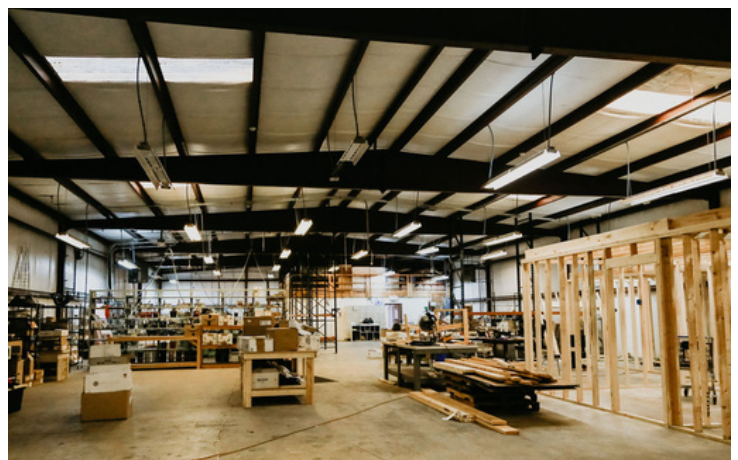
Great location for light industrial user in Aberdeen's Industrial Park just off NC Hwy 5 and less than 2 miles from downtown Aberdeen. A portion of this building is available to lease with 1,000 +/- square feet of renovated office space at the front of the building and 3,500 +/- square feet of heated warehouse space at the back with 16ft ceilings, 2 roll-up doors, and one drive-up dock. Electric pro-rated. Tenant pays propane gas and internet.

HOLLY BELL
NC BROKER
C: 910.690.1065
HOLLY@CSGNC.COM

CAROLINA SUMMIT GROUP
390 SW Broad Street, Suite B
Southern Pines, NC 28387
910.684.5353
carolinasummitgroup.com

GEORGE MANLEY
NC BROKER
C: 910.603.8395
GEORGE@CSGNC.COM

PHOTOS

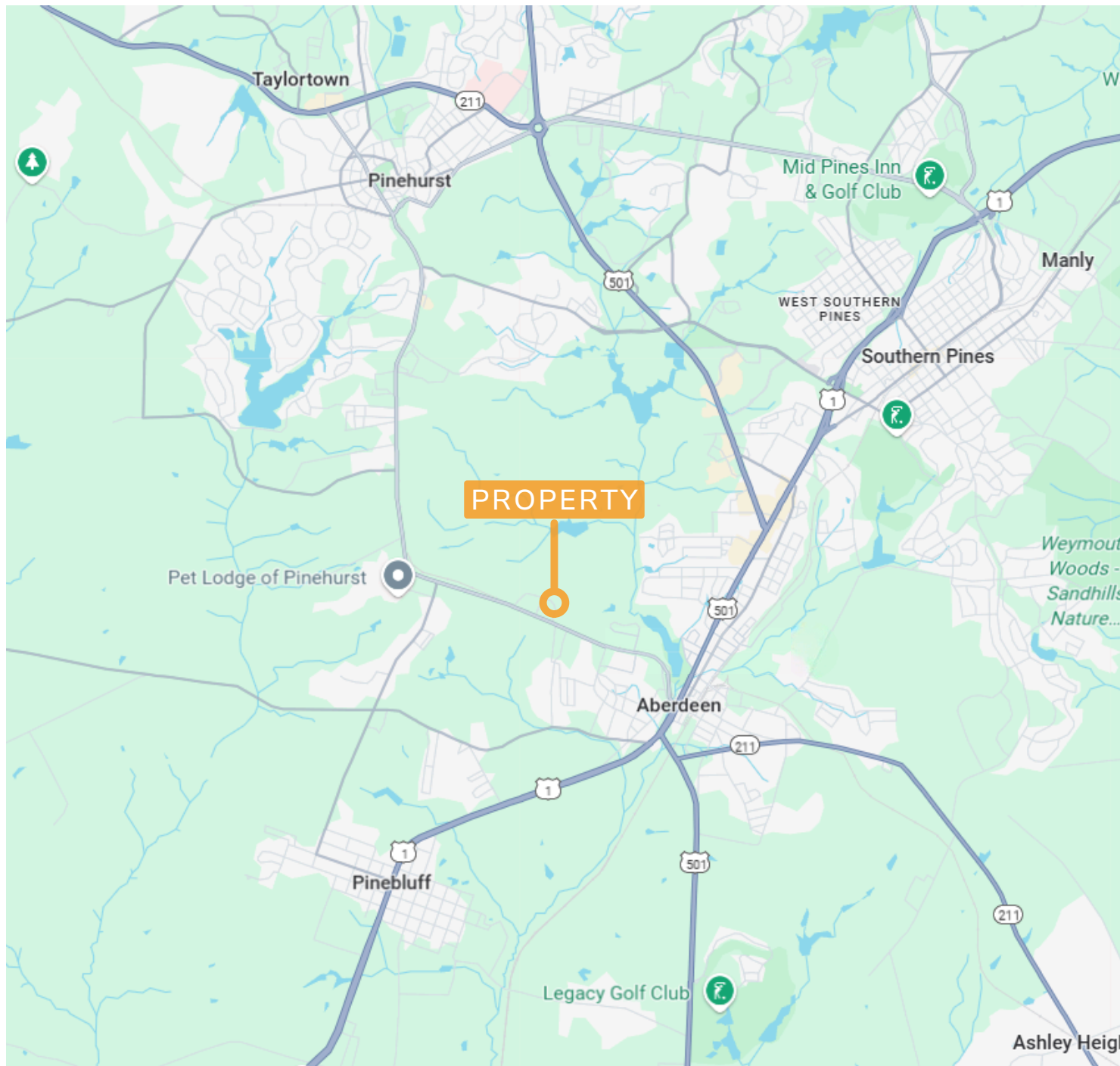


HOLLY BELL
NC BROKER
C: 910.690.1065
HOLLY@CSGNC.COM

CAROLINA SUMMIT GROUP
390 SW Broad Street, Suite B
Southern Pines, NC 28387
910.684.5353
carolinasummitgroup.com

GEORGE MANLEY
NC BROKER
C: 910.603.8395
GEORGE@CSGNC.COM

AREA MAP

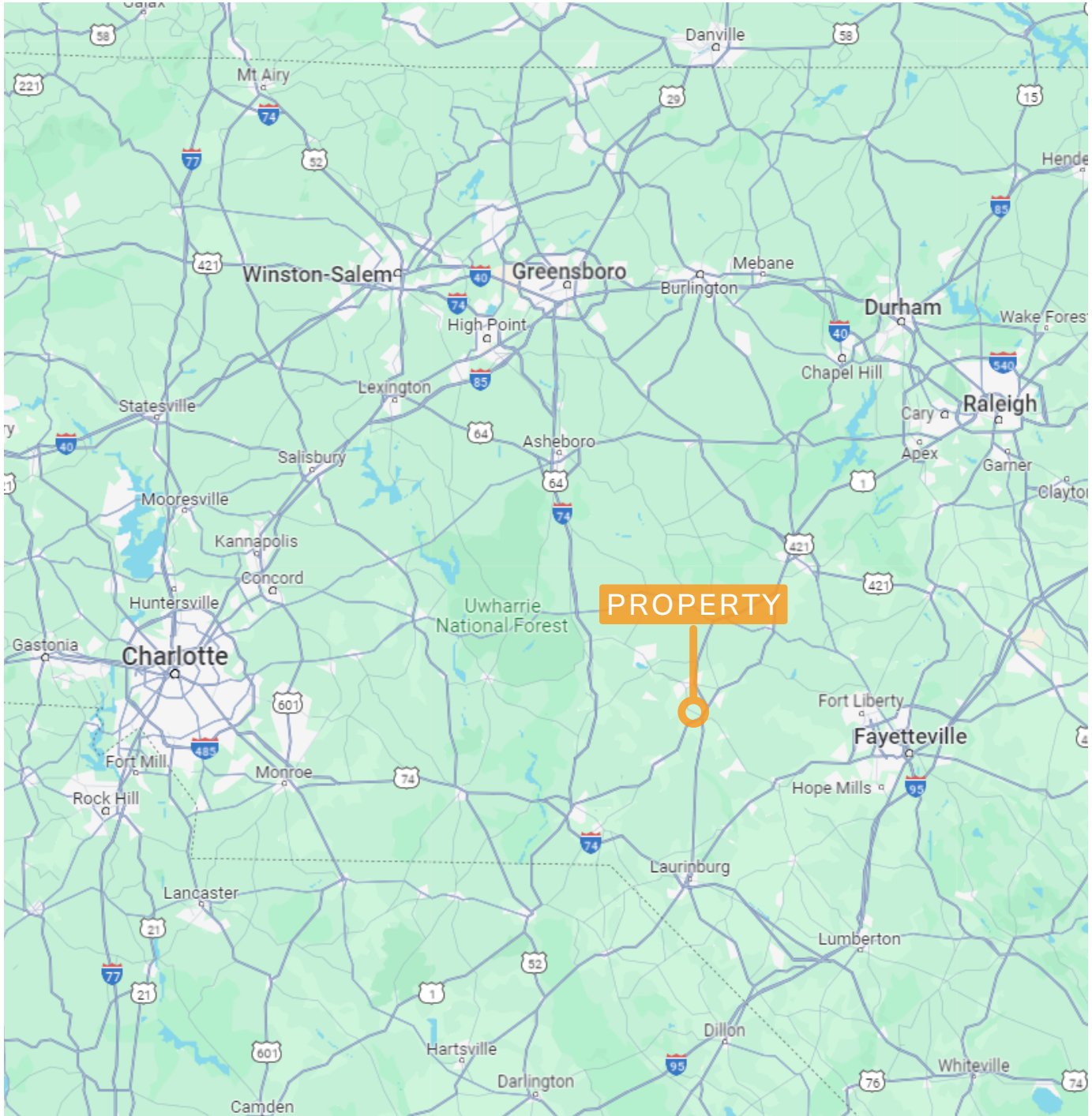


HOLLY BELL
NC BROKER
C: 910.690.1065
HOLLY@CSGNC.COM

CAROLINA SUMMIT GROUP
390 SW Broad Street, Suite B
Southern Pines, NC 28387
910.684.5353
carolinasummitgroup.com

GEORGE MANLEY
NC BROKER
C: 910.603.8395
GEORGE@CSGNC.COM

LOCATION MAP



HOLLY BELL
NC BROKER
C: 910.690.1065
HOLLY@CSGNC.COM

CAROLINA SUMMIT GROUP
390 SW Broad Street, Suite B
Southern Pines, NC 28387
910.684.5353
carolinasummitgroup.com

GEORGE MANLEY
NC BROKER
C: 910.603.8395
GEORGE@CSGNC.COM