



## FLEX SPACE FOR LEASE

### LEASE OVERVIEW

**LEASE PRICE** | \$3,500 PER MONTH

**LEASE TYPE** | MODIFIED GROSS

**SQUARE FEET** | 2,000 +/- SF

**PARCEL ID** | 00057127

**ZONING** | GENERAL BUSINESS

Great opportunity to lease flexible space in Yadkin Park on Davis Street, just seconds from Highway 15/501. Surrounded by active national retailers including Walmart and Lowe's, the space features a large open area with drive-in access via roll-up door, a private office, and restroom. Suitable for a variety of business uses, the building is shared with Whistle Stop Press. Water is included; tenant pays electric and internet. Available December 1, 2025.

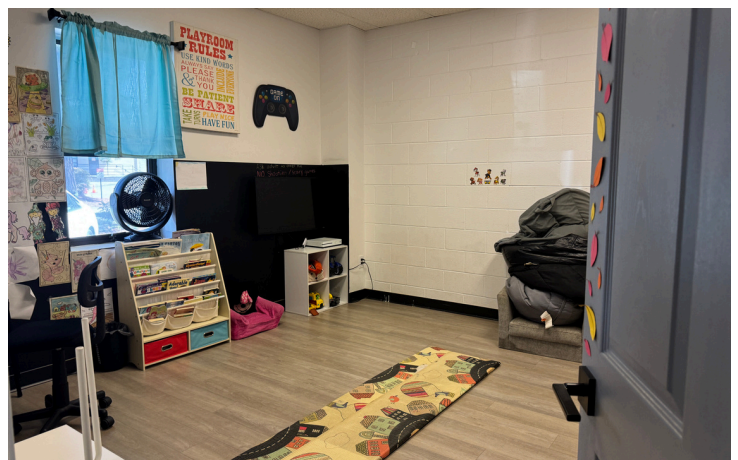
**HOLLY BELL**  
NC BROKER  
C: 910.690.1065  
HOLLY@CSGNC.COM

**CAROLINA SUMMIT GROUP**  
390 SW Broad Street, Suite B  
Southern Pines, NC 28387  
910.684.5353  
carolinasummitgroup.com

**GEORGE MANLEY**  
NC BROKER  
C: 910.603.8395  
GEORGE@CSGNC.COM



## PHOTOS



**HOLLY BELL**  
 NC BROKER  
 C: 910.690.1065  
[HOLLY@CSGNC.COM](mailto:HOLLY@CSGNC.COM)

**CAROLINA SUMMIT GROUP**  
 390 SW Broad Street, Suite B  
 Southern Pines, NC 28387  
 910.684.5353  
[carolinasummitgroup.com](http://carolinasummitgroup.com)

**GEORGE MANLEY**  
 NC BROKER  
 C: 910.603.8395  
[GEORGE@CSGNC.COM](mailto:GEORGE@CSGNC.COM)



## RETAIL MAP



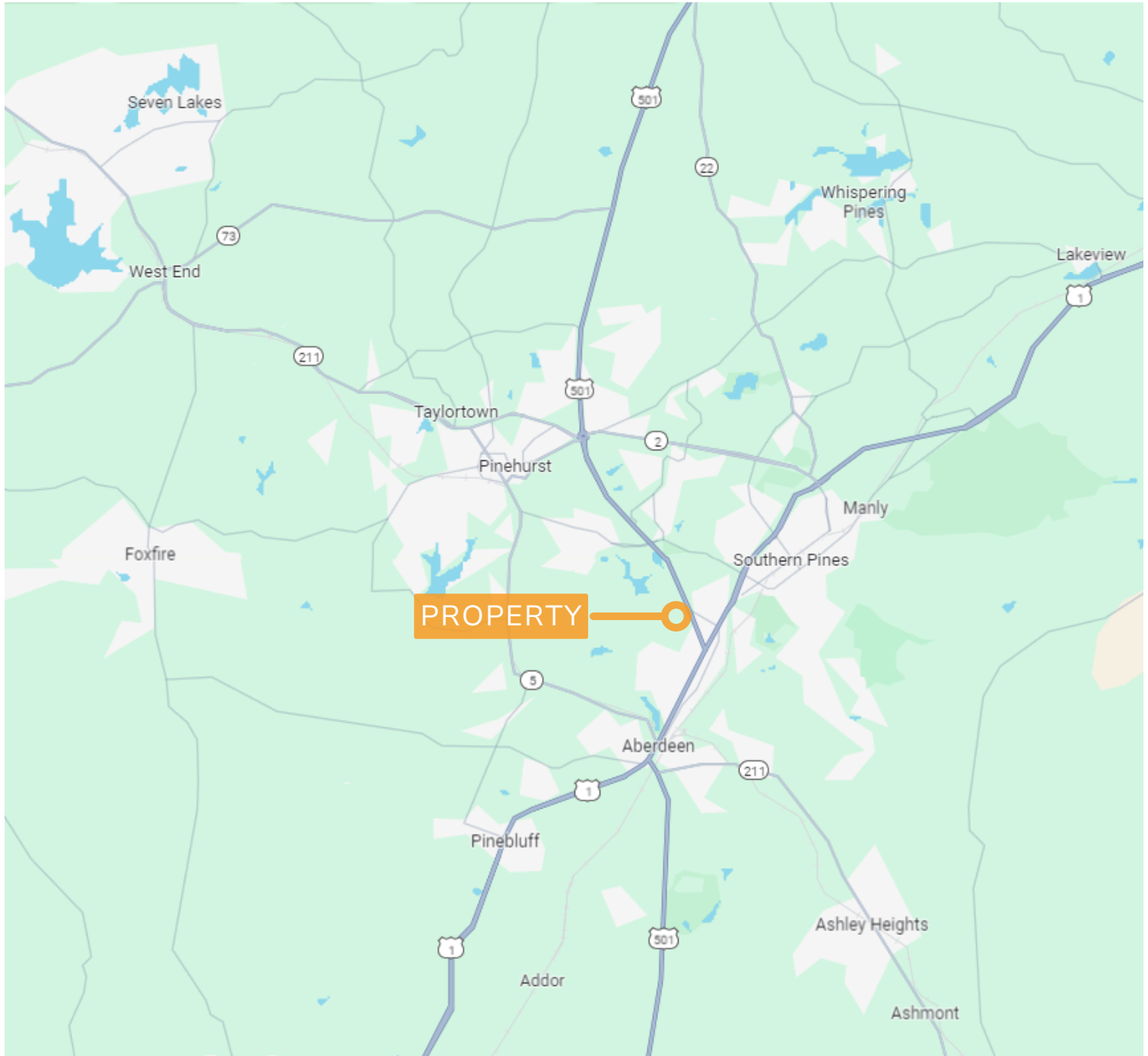
**HOLLY BELL**  
 NC BROKER  
 C: 910.690.1065  
 HOLLY@CSGNC.COM

**CAROLINA SUMMIT GROUP**  
 390 SW Broad Street, Suite B  
 Southern Pines, NC 28387  
 910.684.5353  
 carolinasummitgroup.com

**GEORGE MANLEY**  
 NC BROKER  
 C: 910.603.8395  
 GEORGE@CSGNC.COM



## LOCATION MAP



**HOLLY BELL**  
NC BROKER  
C: 910.690.1065  
HOLLY@CSGNC.COM

**CAROLINA SUMMIT GROUP**  
390 SW Broad Street, Suite B  
Southern Pines, NC 28387  
910.684.5353  
carolinasummitgroup.com

**GEORGE MANLEY**  
NC BROKER  
C: 910.603.8395  
GEORGE@CSGNC.COM