

113+ ACRES FOR SALE IN HOKE COUNTY

PROPERTY OVERVIEW

PRICE | \$6,900,000

PARCEL ID | 494640001026

ACREAGE | +/- 113.29 ACRES

ZONING | RA-20

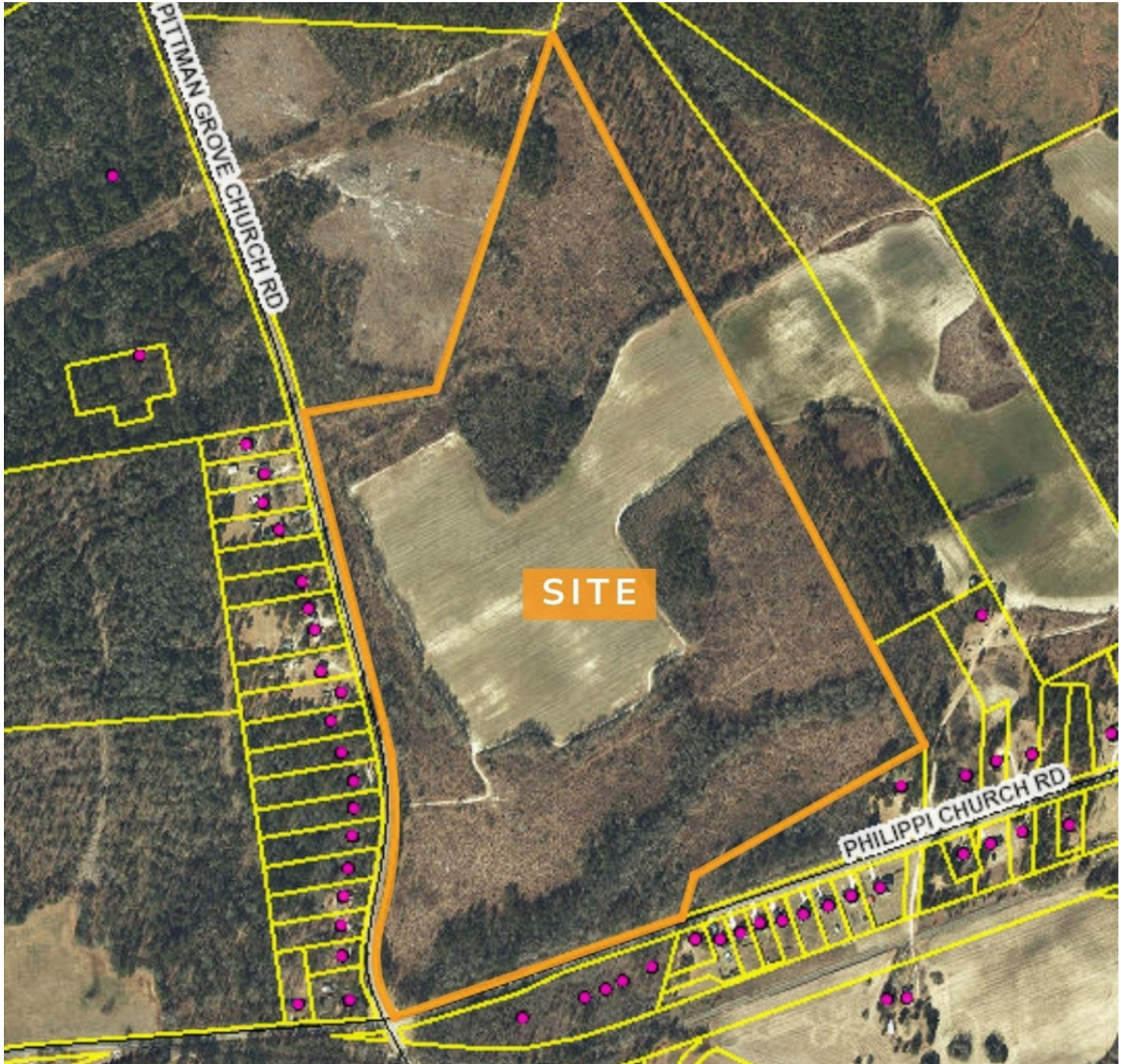
+/- 113.29 acres located at the corner of Philippi Church Road and Pittman Grove Church Road in Hoke County. Zoned RA-20. PIN 494640001026. The property is located approximately half a mile from a Voluntary Agricultural District and offers road frontage along both Philippi Church Road and Pittman Grove Church Road.

GEORGE MANLEY
NC BROKER
C: 910.603.8395
GEORGE@CSGNC.COM

CAROLINA SUMMIT GROUP
390 SW Broad Street, Suite B
Southern Pines, NC 28387
910.684.5353
carolinasummitgroup.com

HOLLY BELL
NC BROKER
C: 910.690.1065
HOLLY@CSGNC.COM

AERIAL MAP

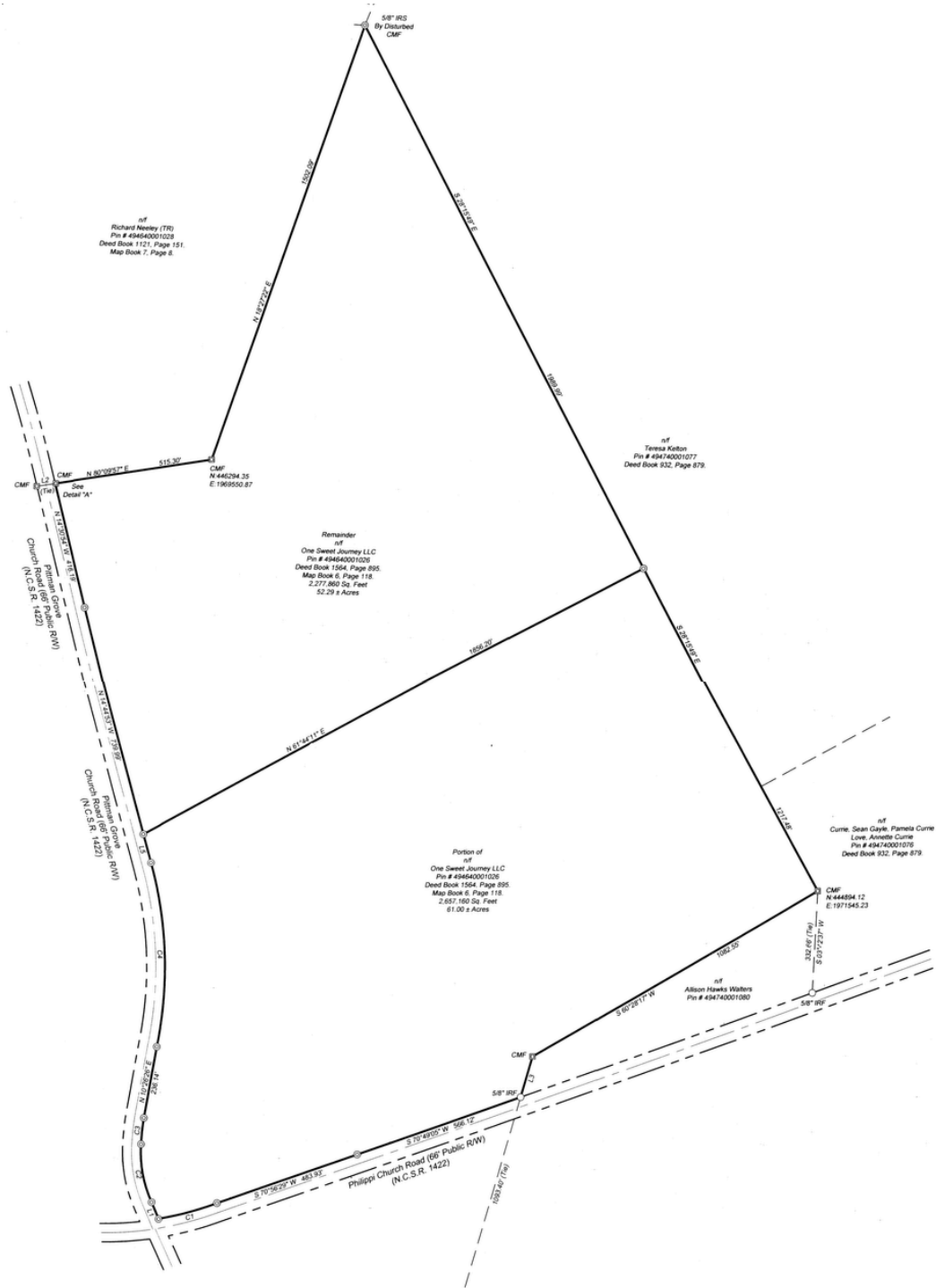


GEORGE MANLEY
NC BROKER
C: 910.603.8395
GEORGE@CSGNC.COM

CAROLINA SUMMIT GROUP
390 SW Broad Street, Suite B
Southern Pines, NC 28387
910.684.5353
carolinasummitgroup.com

HOLLY BELL
NC BROKER
C: 910.690.1065
HOLLY@CSGNC.COM

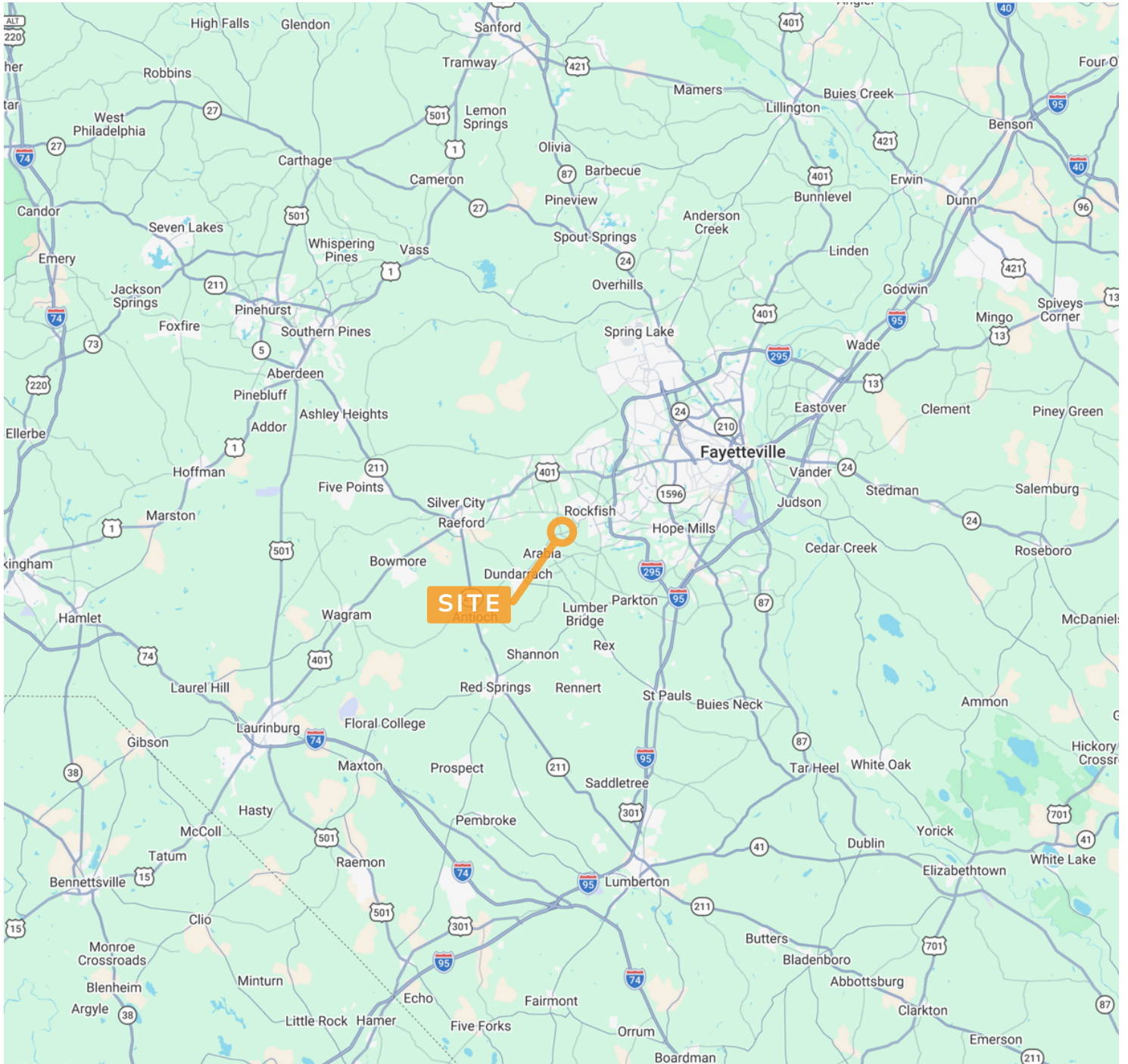
PLAT



NOTE: Plat is for illustrative purposes only.
 Actual dimensions & details may vary.

The information contained herein has been obtained through sources deemed reliable but cannot be guaranteed as to its accuracy. Any information of special interest should be obtained through independent verification.

LOCATION MAP



GEORGE MANLEY
NC BROKER
C: 910.603.8395
GEORGE@CSGNC.COM

CAROLINA SUMMIT GROUP
390 SW Broad Street, Suite B
Southern Pines, NC 28387
910.684.5353
carolinasummitgroup.com

HOLLY BELL
NC BROKER
C: 910.690.1065
HOLLY@CSGNC.COM