



COMMERCIAL BUILDING FOR SALE

PROPERTY OVERVIEW

PRICE | \$750,000.00

PARCEL ID | PART 00023391 & 20130318

ACREAGE | +/- 1.51 ACRES

SQUARE FOOTAGE | +/- 9,500 SF

ZONING | B-2, HIGHWAY COMMERCIAL

Located at 3619 Murdocksville Road near the intersection with Juniper Lake Road in West End, this +/- 1.51-acre commercial property includes a +/- 9,500 SF primary building with an existing tenant occupying approx. 6,400 SF and the remaining space available for occupancy, along with a secondary rear building. The property is zoned B-2 (Highway Commercial) and is a portion of Parcel IDs 00023391 and 20130318. Two nearby lots are also available for purchase, including Lot 1 located along Murdocksville Road in front of the primary building and Lot 3 located along Juniper Lake Road.

GEORGE MANLEY
NC BROKER
C: 910.603.8395
GEORGE@CSGNC.COM

CAROLINA SUMMIT GROUP
390 SW Broad Street, Suite B
Southern Pines, NC 28387
910.684.5353
carolinasummitgroup.com

HOLLY BELL
NC BROKER
C: 910.690.1065
HOLLY@CSGNC.COM

PHOTOS



GEORGE MANLEY
NC BROKER
C: 910.603.8395
GEORGE@CSGNC.COM

CAROLINA SUMMIT GROUP
390 SW Broad Street, Suite B
Southern Pines, NC 28387
910.684.5353
carolinasummitgroup.com

HOLLY BELL
NC BROKER
C: 910.690.1065
HOLLY@CSGNC.COM

PHOTOS

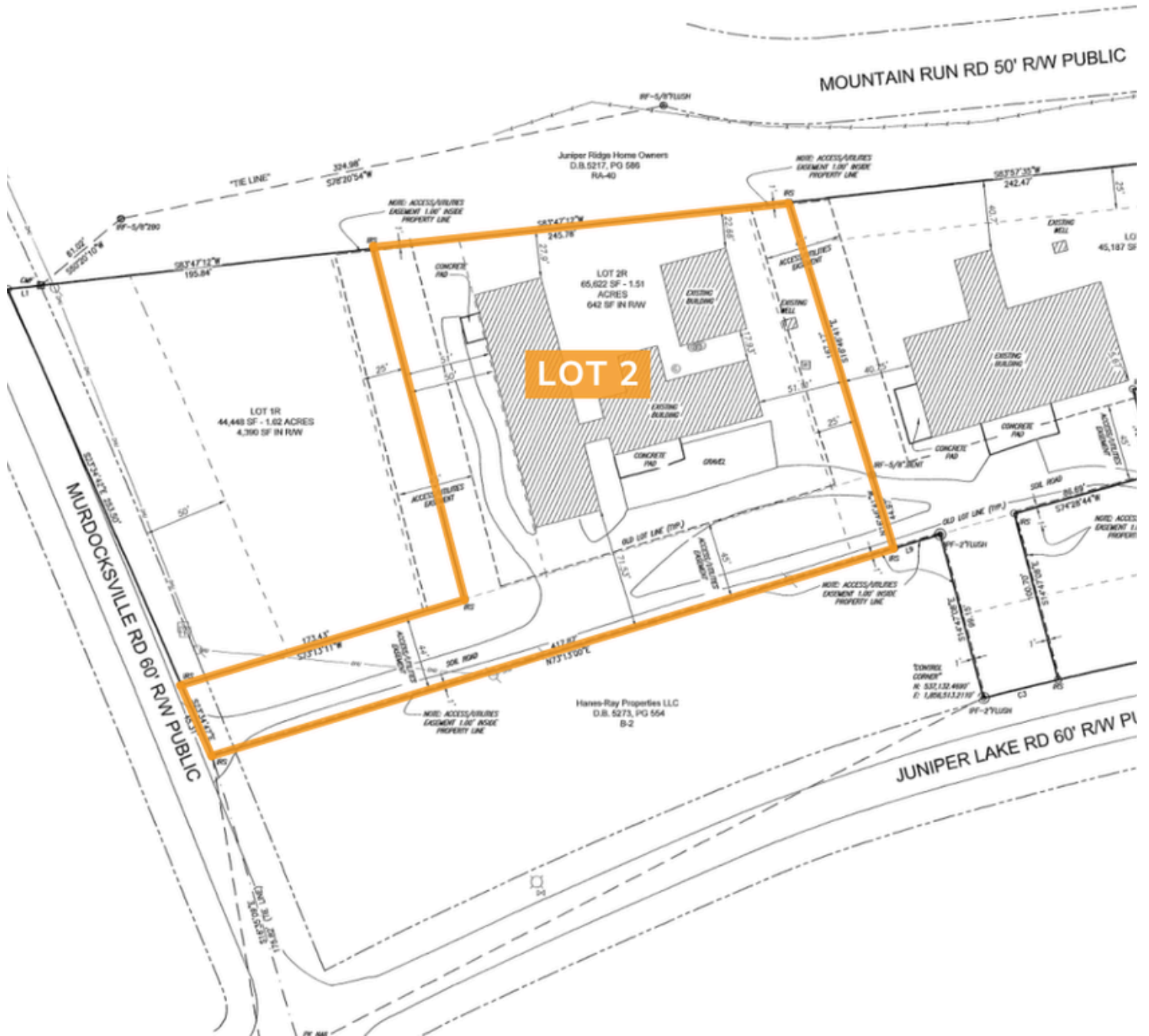


GEORGE MANLEY
NC BROKER
C: 910.603.8395
GEORGE@CSGNC.COM

CAROLINA SUMMIT GROUP
390 SW Broad Street, Suite B
Southern Pines, NC 28387
910.684.5353
carolinasummitgroup.com

HOLLY BELL
NC BROKER
C: 910.690.1065
HOLLY@CSGNC.COM

PROPERTY MAP



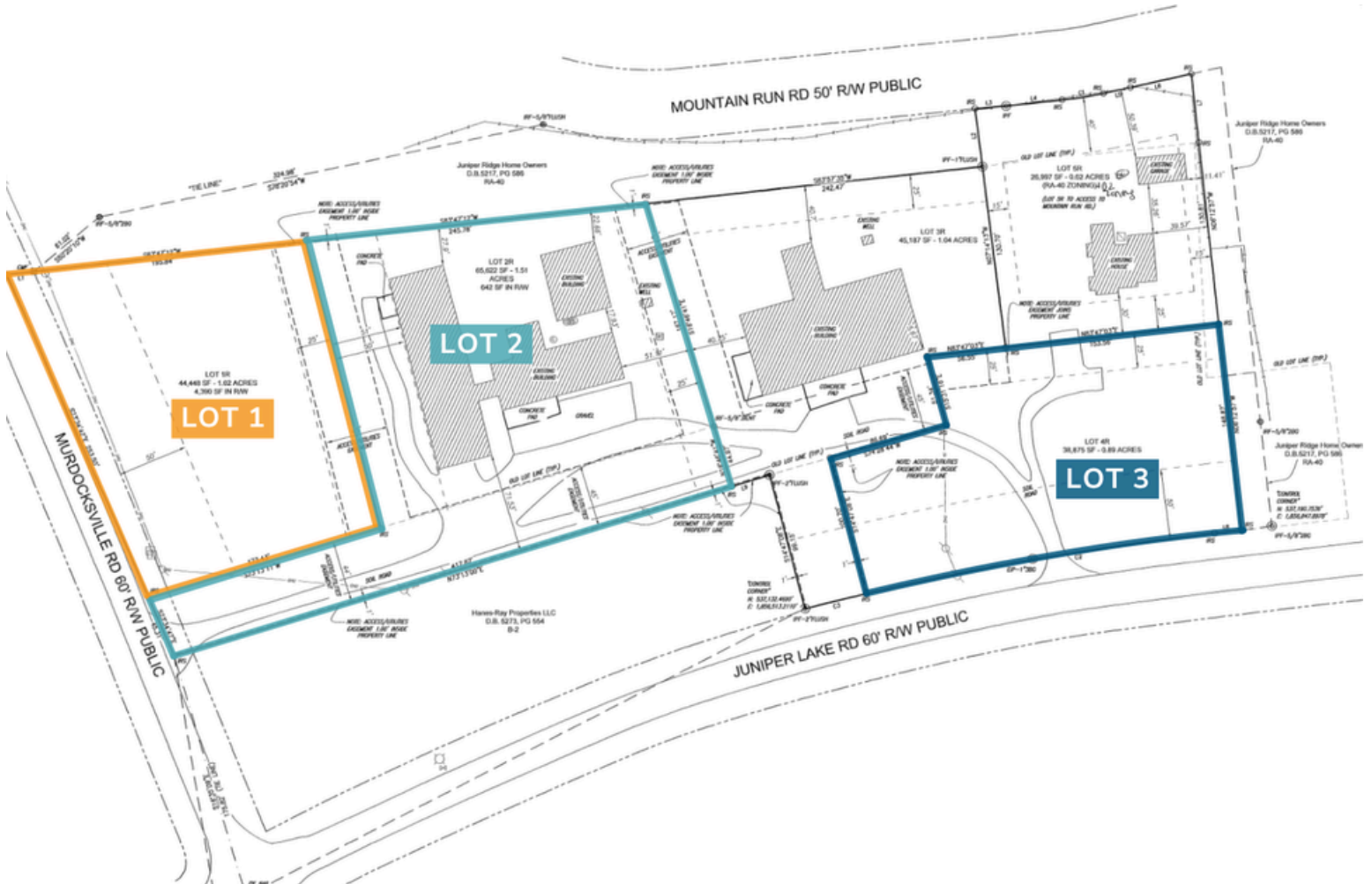
NOTE: Property Map is for illustrative purposes only.
Actual dimensions & details may vary.

GEORGE MANLEY
NC BROKER
C: 910.603.8395
GEORGE@CSGNC.COM

CAROLINA SUMMIT GROUP
390 SW Broad Street, Suite B
Southern Pines, NC 28387
910.684.5353
carolinasummitgroup.com

HOLLY BELL
NC BROKER
C: 910.690.1065
HOLLY@CSGNC.COM

PROPERTY MAP



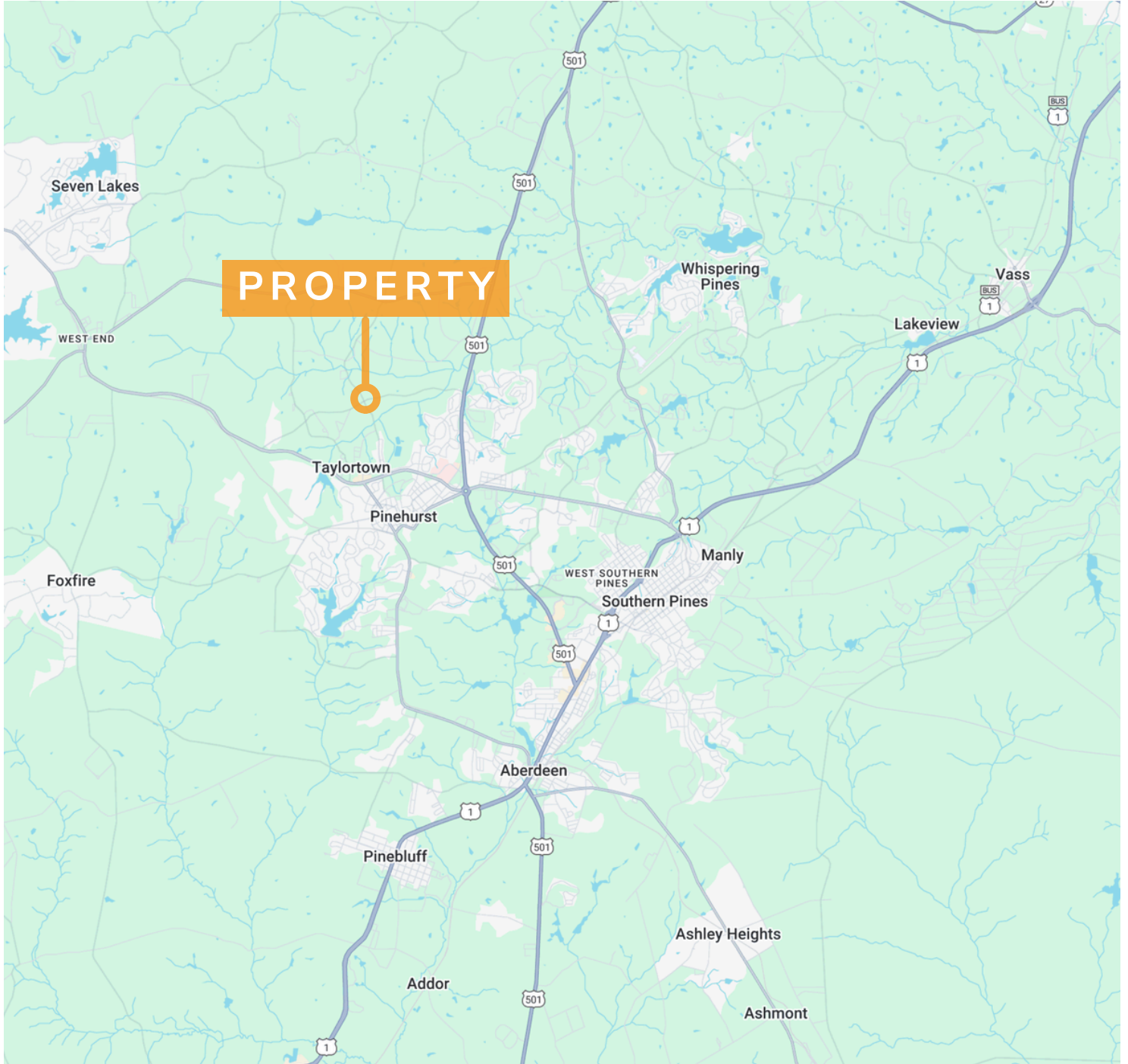
NOTE: Property Map is for illustrative purposes only.
Actual dimensions & details may vary.

GEORGE MANLEY
NC BROKER
C: 910.603.8395
GEORGE@CSGNC.COM

CAROLINA SUMMIT GROUP
390 SW Broad Street, Suite B
Southern Pines, NC 28387
910.684.5353
carolinasummitgroup.com

HOLLY BELL
NC BROKER
C: 910.690.1065
HOLLY@CSGNC.COM

LOCATION MAP



GEORGE MANLEY
NC BROKER
C: 910.603.8395
GEORGE@CSGNC.COM

CAROLINA SUMMIT GROUP
390 SW Broad Street, Suite B
Southern Pines, NC 28387
910.684.5353
carolinasummitgroup.com

HOLLY BELL
NC BROKER
C: 910.690.1065
HOLLY@CSGNC.COM