



## OFFICE FOR LEASE

### LEASE OVERVIEW

AVAILABLE | FRONT SECTION

LEASE PRICE | \$20 PER SF

SQUARE FEET | +/- 2,450 SF

LEASE TYPE | NNN

PARCEL ID | 00053248

ZONING | GENERAL BUSINESS

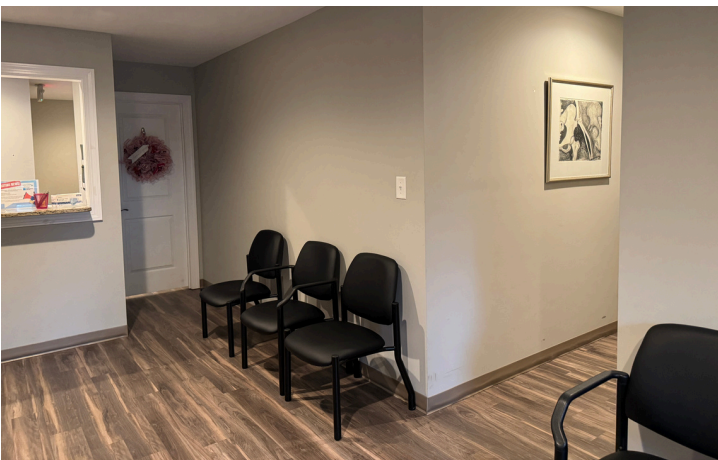
+/- 2,450 SF office suite available for lease in a multi-tenant building in Southern Pines. The space includes multiple offices/rooms and a waiting/reception area, providing a functional layout for a variety of office users. Located at the corner of Turner Street and Davis Street, the property offers on-site parking and three points of ingress/egress. Just seconds from the US Highway 15/501 retail corridor with major retailers and established businesses, including Walmart, Lowe's, and Staples. NNN lease.

**HOLLY BELL**  
NC BROKER  
C: 910.690.1065  
HOLLY@CSGNC.COM

**CAROLINA SUMMIT GROUP**  
390 SW Broad Street, Suite B  
Southern Pines, NC 28387  
910.684.5353  
carolinasummitgroup.com

**GEORGE MANLEY**  
NC BROKER  
C: 910.603.8395  
GEORGE@CSGNC.COM

**PHOTOS**



**HOLLY BELL**  
NC BROKER  
C: 910.690.1065  
HOLLY@CSGNC.COM

**CAROLINA SUMMIT GROUP**  
390 SW Broad Street, Suite B  
Southern Pines, NC 28387  
910.684.5353  
carolinasummitgroup.com

**GEORGE MANLEY**  
NC BROKER  
C: 910.603.8395  
GEORGE@CSGNC.COM

**PHOTOS**

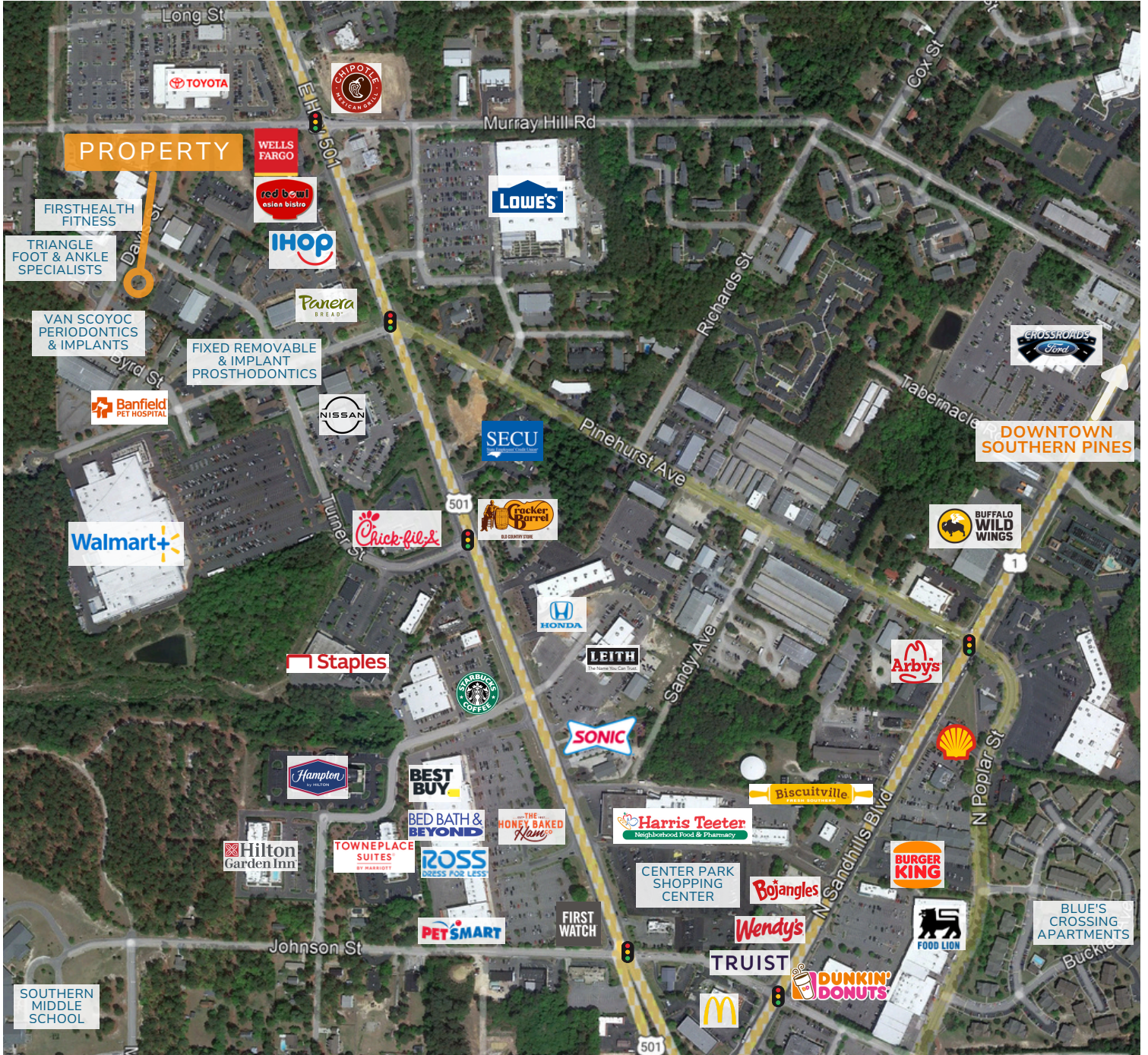


**HOLLY BELL**  
NC BROKER  
C: 910.690.1065  
HOLLY@CSGNC.COM

**CAROLINA SUMMIT GROUP**  
390 SW Broad Street, Suite B  
Southern Pines, NC 28387  
910.684.5353  
carolinasummitgroup.com

**GEORGE MANLEY**  
NC BROKER  
C: 910.603.8395  
GEORGE@CSGNC.COM

AREA MAP

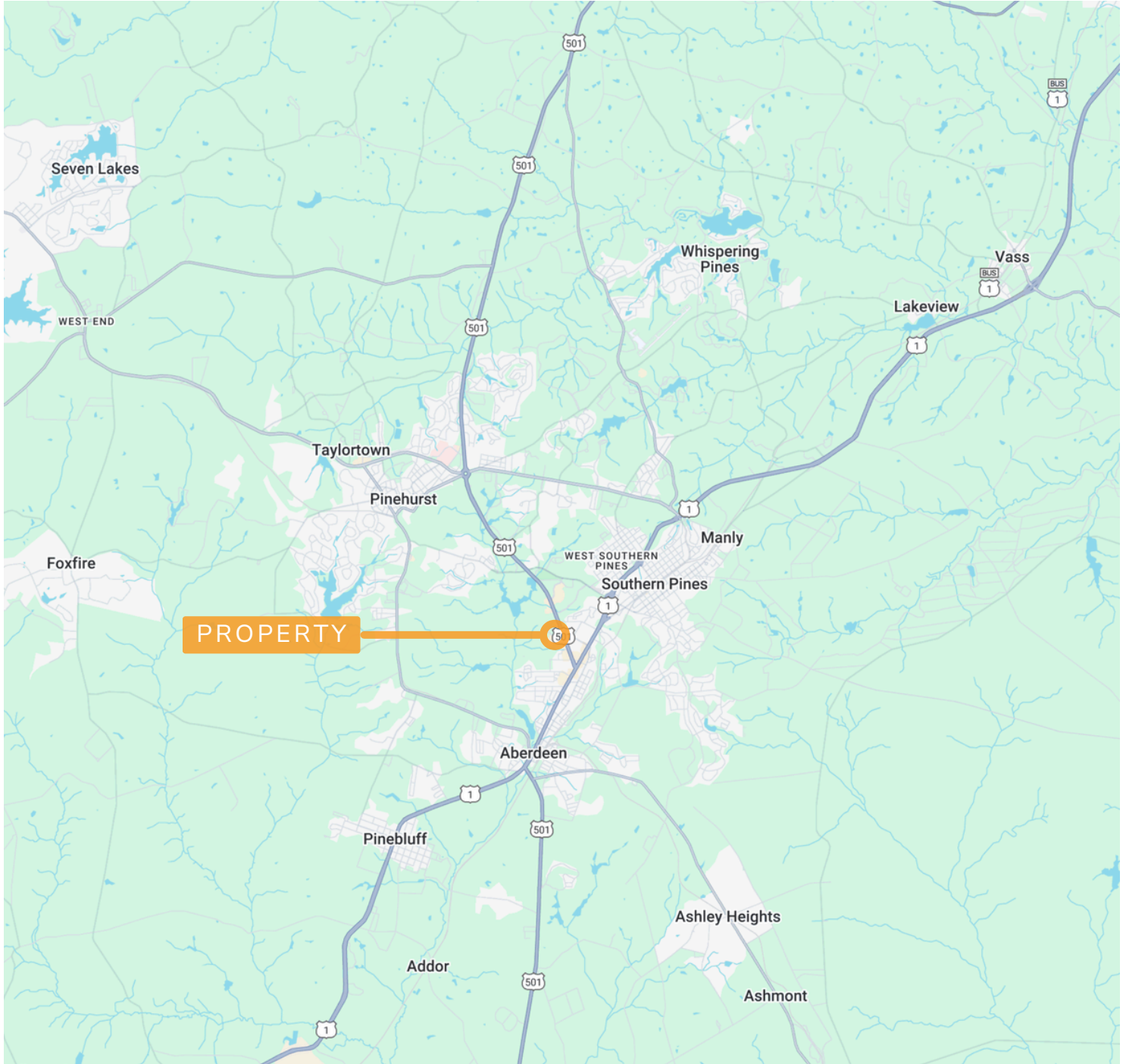


**HOLLY BELL**  
NC BROKER  
C: 910.690.1065  
HOLLY@CSGNC.COM

**CAROLINA SUMMIT GROUP**  
390 SW Broad Street, Suite B  
Southern Pines, NC 28387  
910.684.5353  
carolinasummitgroup.com

**GEORGE MANLEY**  
NC BROKER  
C: 910.603.8395  
GEORGE@CSGNC.COM

**LOCATION MAP**



**HOLLY BELL**  
NC BROKER  
C: 910.690.1065  
HOLLY@CSGNC.COM

**CAROLINA SUMMIT GROUP**  
390 SW Broad Street, Suite B  
Southern Pines, NC 28387  
910.684.5353  
carolinasummitgroup.com

**GEORGE MANLEY**  
NC BROKER  
C: 910.603.8395  
GEORGE@CSGNC.COM